

Volume 16, Issue 3, August 2021

IPI MAGAZINE

GOLF, SPORTS GROUNDS, LANDSCAPE & GREEN TRANSPORTATION

**KHARGAR VALLEY
GOLF COURSE**
A MOVE UP IN LIFESTYLE

**COIMBATORE
GOLF CLUB**
Evolution of a Project
The 8th Hole Lake

**KIMMANE GOLF
RESORT**
Experience Luxury
with Nature

**TORO PRIDE OF
EXCELLENCE**
Award Celebration





3

MESSAGE FROM OUR MANAGING DIRECTOR

Receiving a Bull Award from Toro is always a huge honour and every distributor strives for it.

What's special



4

PRIDE OF EXCELLENCE

IPI receives Distributor of Excellence Award for the second time.



6

MANAGING THE CHALLENGES OF COVID LOCKDOWN

The Covid-19 pandemic has been one of the most dangerous challenges this world has faced in our lifetime.

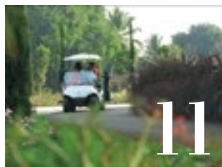


8

WHAT HAPPENED TODAY?

Coimbatore Golf Club

- Evolution of a project
- The 8th Hole Lake



11

HIGHLIGHTS

Kimmane Golf Resort

Experience Luxury with Nature by Ronak Jairam



13

HIGHLIGHTS

Meet our Director of Golf at KVGC

IPI is happy to welcome onboard Mr. Tarun Ghogale as Director of Golf at Kharghar Valley Golf Club and Regional Head Sales & Marketing for Western Region of India.

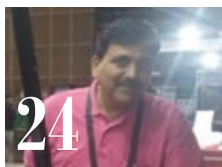
In Memory of



23

KIRAN MEDA

A loss for the Golf Community by Ravi Garyali



24

SANJAY KULKARNI

Died unexpectedly due to Road accident on 3rd August 2021

What's new



14

TORO TURF EQUIPMENT

The Royal St George's Golf Club prepares for the open with toro® equipment

Greenkeeping team creates optimal course conditions with Toro mowers and irrigation



15

Built for today and for the future

This year's introduction of Toro's new all-electric fixed-head Greensmaster® e1021 mower extends the golf industry's largest lineup of all-electric and hybrid mowers and utility vehicles.



17

Redefining Productivity

What will your next 4.9 m (16') rotary mower do for you?

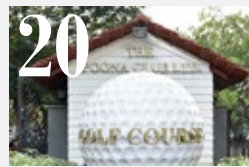


18

TORO GOLF IRRIGATION

Infinity® series sprinklers: precision with infinite possibilities

Your irrigation system is only as precise as the component that directly applies the water to the turf.



20

YAMAHA GOLF CAR AT

The Poona Club Golf Course

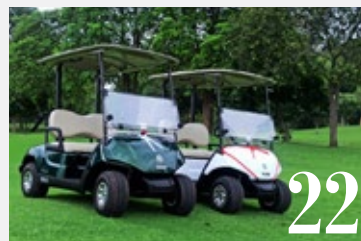
PCGC, as it is fondly called by golfers, is one of oldest and prestigious golf course in the country.



21

ITC Grand Bharath, Gurgaon

ITC Grand Bharat, the prestigious 5-star golf resort has a 27-hole golf course designed by Jack Nicklaus.



22

The Gaekwad Baroda Golf Club

GBGC management has recently updated its fleet with two Yamaha Cruise Green & White golf cars, unique in their style and efficiency.



25

MAINTENANCE TIPS FROM IPI

How To Select The Right Battery For The Right Applications

Selecting the wrong type of battery will cause disappointing performances, shortened lifetime and wasted money.



27

SPECIAL SOCIAL ACTIVITY

Beat the pandemic with ethics and sustainability Together is easier - By Vita Zinna

The tragedy of the COVID-19 pandemic is having a profound effect on the lives of millions of people around the world.

MESSAGE FROM MD

DEAR FRIENDS

Receiving a Bull Award from Toro is always a huge honour and every distributor strives for it. Winning this award brings sense of professional satisfaction, immense joy and acknowledgment of our team's effort. But more importantly, it also encourages us to maintain the habit to look for excellence in every little thing that we do.

This is our second award, and on a personal note, this one felt so much more satisfying.

We all know the reason. Year 2020,

our world witnessed something so unprecedented, a pandemic caused by a virus that was only seen in the movies or science fictions.

India was completely shut down with few hours of notice. With offices, shops, golf courses, airports, buses, railways, everything shutting down, life came to sudden standstill.

We were glaring at uncertainty, confusion and hardship ahead of us. We can't forget what it meant for millions of poor people who were left jobless, penniless and stuck

in locations far from homes and walking hundreds of miles to reach their homes. We were witnessing a real human tragedy, massive job losses, closure of businesses, choking of cash flow and a real fear of death due to infection.

This was a real test for survival - finding the way to serve the customers without compromising on the personal health and safety.

This time each of our team member acted as a Captain to lead the way through this most challenging period by using their

own initiatives to keep the wheels of IPI life line moving.

We are truly honoured to be recognized by Toro management. We believe our strength comes from our Customers whose loyalty and good will has stood the test of time. Our core values continue to be focused on our long term relationship with customers and providing them with tailor made solutions and comprehensive after-market care.

Ravi Garyali

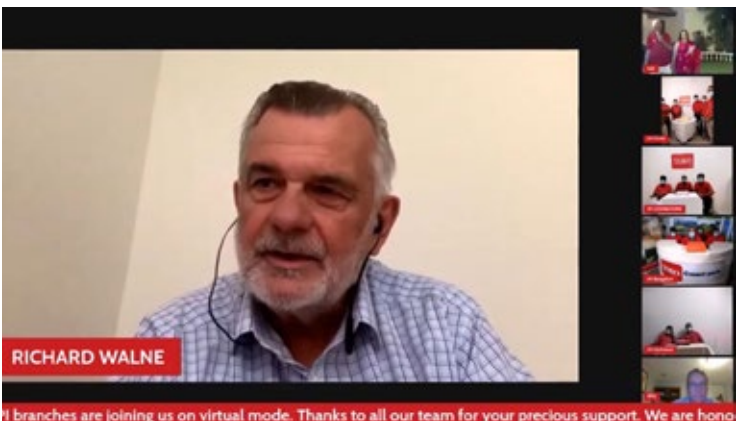




WHAT'S SPECIAL IN THIS EDITION?

Pride of Excellence

IPI receives Distributor of Excellence Award for the second time. The Award is considered Toro's Top Honour and is based on outstanding achievements in several parameters including quality of Customer support and financial health of the Company.



branches are joining us on virtual mode. Thanks to all our team for your precious support. We are hono

Celebrate! All IPI branches are joining us on virtual mode. Thanks to all our team for your precious sur





WHAT'S SPECIAL IN THIS EDITION?

MANAGING THE CHALLENGES OF COVID LOCKDOWN

The Covid-19 pandemic has been one of the most dangerous challenges this world has faced in our lifetime. It is above all a human crisis with severe health and socio-economic consequences.

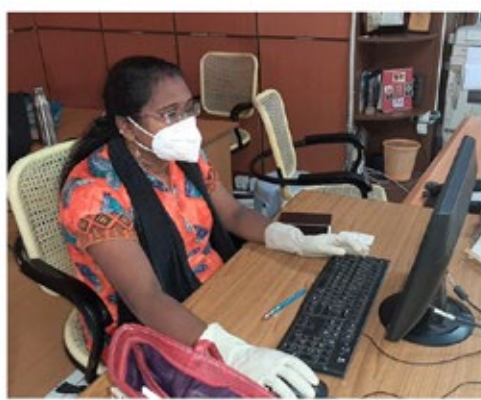
IPI, with its team of 175 strong, has been committed to serving its customers, while maintaining Covid-19 safety protocol. Our front lines represented by Service and site technicians are well supported

by the Back office and Logistics team to ensure all Customer orders and service requests are addressed promptly with least inconvenience. The use of digital technology has helped our team to provide on-line trouble-shooting and technical support to overcome the travel restrictions in certain high risk areas. This has ensured timely maintenance of golf courses during the on-going lockdown.

“No one has ever become poor by giving”

Anne Frank





STAY SAFE
STAY CONNECTED

Evolution of a project

It is intriguing how the story of a great visionary, philanthropist and golfer is marking up an impact on the present.

Shri K Rajagopal had undoubtedly a charismatic personality. He was instrumental in transforming a huge chunk of barren land at Chettipalayam into the lush green Coimbatore golf course by bringing water from 30 KMs away to irrigate the Course, which boasts of having one of the best Greens in India. During his Presidency of Coimbatore Golf club, he contributed immensely to bring in new technology and agronomical knowledge to continuously up-grade the standard of the Course.

Remaining a simple, modest and humble man moved by his immense passion for sports, Mr. Rajagopal was credited with bringing about many revolutionary changes to golf in India. He was elected the President of Indian Golf Union, not once, but five times. It was he who

brought the game to this part of the world and developed it from the stage of infancy and was a great Guru to later day Golf Enthusiasts. He jelled well with, the young



or the old, and inspired them by sharing with them a word or two.

We especially remember him as the man who encouraged IPI and happened to be the first customer in India to have bought Toro Greens mowers. The green mowers which IPI sold to Coimbatore Golf Course are still in operation after more than 25 years. It was a great sight in those days to see two frail ladies mowing all 18 greens in matter of hours, replacing manual mowing lasting several days.

Today that CGC has emerged as a full fledged golfing facility, his son, Mr. Gopi Rajagopal, remains loyal to IPI deciding to add an innovative Ride-on TORO TURF Equipment, TIME CUTTER, to maintain the top quality greens in the golf course and the perfect playability.



With the new TIME CUTTER ZERO TURN MOWER, CGC relies on IPI as trusted service provider able to guarantee the adequate after sale support and on TORO for innovation yet tradition of quality, long lasting products and accountability.

Toro zero turn mower features the

ultimate in comfort and efficiency making the greens playable in less time.

The Coimbatore Golf Club remains dedicated to preserving both the memory and the principles of its founder. Mr. Gopi Rajagopal, is driven by the same passion for golf and the same ethical values and

desire for sustainable innovations.

On the same principles, Mr. Gopi Rajagopal has pursued the vision of his father, to have a water body in the golf course in the hope of harvesting rainwater which, eventually, has been converted into a lake.



The 8th Hole Lake at Coimbatore Golf Club - *By Gopy Rajagopal*

The "Canyon" in the 8th hole at The Coimbatore Golf club was excavated to provide soil for creation of the greens and tee boxes. At that time crowbars and shovels were the only tools available to do this work. With much sweat and toil was created the canyon, in the hope of also

harvesting rainwater. However, given poor rainfall, as well as the rather porous nature of the soil, the ability to harness rainwater was largely limited.

With a view to fulfil the original vision of the founders of the golf course, as well as

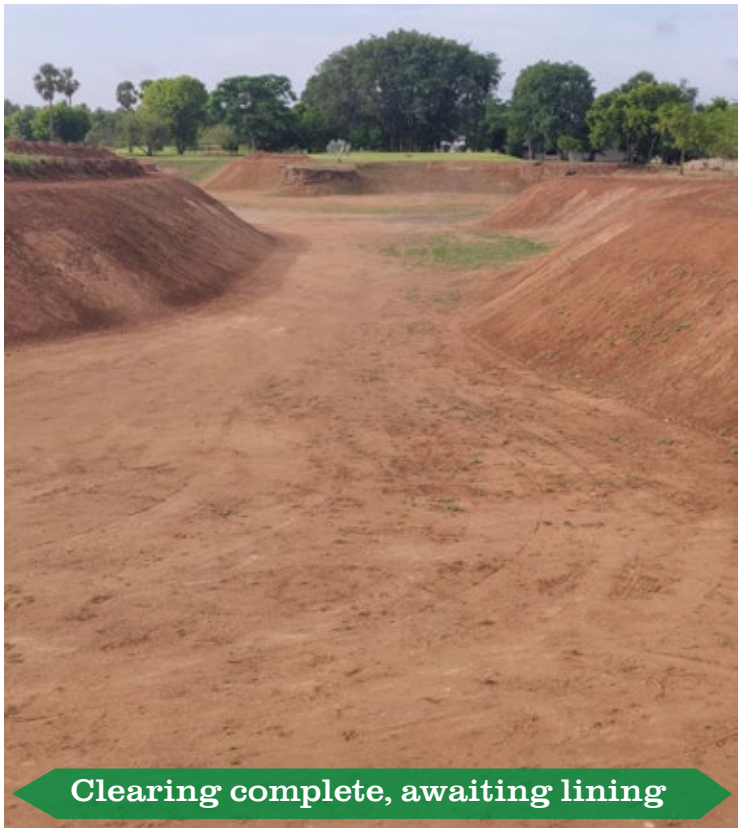
to have water storage in the golf course to offset any disruptions a decision was made to convert this to a lake. The course committee utilised the lockdown, when play was suspended to quickly finish this task. The whole task was completed in 6 weeks.



Clearing of the canyon



Clearing work nearing completion



Clearing complete, awaiting lining



Cleared, lining installed and water filled



HIGHLIGHTS

Kimmane Golf Resort

Experience Luxury with Nature by Ronak Jairam

Reconnect & Reinvigorate your natural senses at a place of incredible natural beauty with meaningful experience, impeccable hospitality and bespoke luxury - Welcome to The Kimmane Golf Resort in Shimooga!

The recently inaugurated luxury golf resort is an International Award Winner 2021 for the Best Luxury Golf Resort in Southern India. At Kimmane Golf Resort the expansive views of the surrounding ecosystem from most of the rooms and suites provide a perfect opportunity to admire the lush green surroundings and watch the Hornbills glide by. Kimmane Golf Resort is one of the most luxurious resorts in India. Situated on the banks of Aladevara Lake, the Resort provides the perfect back drop for kayaking, Corackling apart from Golfing.

The Golf Course is indeed one of the most sought after courses in Southern India, where many professional golfers come to play and practice.

A level of community and sustainability at its heart, a level of service that doesn't just do the right thing but that does it well. For Kimmane Golf Resort, they are a simple way to reach out, respect the environment and open your senses, to the wonder that is all around you. Kimmane Golf Resort is home to about 75 species of birds, many of which are endemic to the area. It's a heaven for bird watchers.

The resort boasts of incredible dining

experiences at The SAA restaurant. The Quarter located at level one is probably of the best watering holes in Southern India with wonderful views of the Golf Course and the foot hills of Western Ghats. The resort also caters to weddings, family celebrations and conferences after which the guests may relax by the poolside with incredible views of the Golf Course and the Western Ghats.

At Kimmane Golf Resort you can





experience first - hand the deep care about people and their cultures and ecosystems you are part of. Everything from helping the team to grow their own organic produce and protecting the local flora & fauna projects who you are. The staff at the golf resort will spare no efforts to make your stay a memorable one.

The immaculate Golf Course on the banks of Lake Aladevara is set in the backdrop of western Ghats. The well maintained golf course uses the best golf course maintenance equipment. The promoters, after exhaustive research zeroed in on Toro

Turf equipment for the most advanced technology and long lasting durability. With multiple-electric & fuel powered options engineered by Toro helped to reduce engine exhaust emissions and noise pollution. This was thought as an essential support to maintain the golf course in harmony of the pristine surroundings, naturally. The service levels ensured by IPI is equally excellent.

Striving for highest possible standards and latest technology, Kimmane Golf Resort choose Yamaha Golf Carts. When the guests arrive at Kimmane, we want to

make a lasting impression. Hence, Yamaha was the choice. Introducing the electric golf carts in our golf course helped in enabling better efficiency, additional features and green power use. Yamaha Golf Carts added a luxury statement of style, comfort and safety. The design and attention to detail is the best in Yamaha Electric Carts and we are highly satisfied of our choice."

IPI thanks Mr. Ronak Jairam for his words of appreciation that witnesses our long lasting relationship: The best chooses only the best!





HIGHLIGHTS

Meet our Director of Golf at KVGC

IPI is happy to welcome onboard Mr. Tarun Ghogale as Director of Golf at Kharghar Valley Golf Club and Regional Head Sales & Marketing for Western Region of India.

Tarun holds an Economics Honours and has been associated with the Golf Industry where he had the opportunity to collaborate with Troon International at Prestige GOLF SHIRE in Bangalore.

His interesting background and experience in Management and Sales in other

industries like Hospitality, Real Estate and Oil & Gas, grew in him a versatile personality.

A passionate golfer, he was trained in the USA by one of the best coaches Dr. Jim Suttie. He also worked closely with Kel Llewellyn and Mark Gregson Walters in Australia and Dubai respectively. Tarun is a well-known face in the Golf Industry in India.

He was a top 5 ranked amateur golfer in his twenties and was sponsored by Bharat

Petroleum Corporation Limited who supported him in his initial formative years as a Golfer. During this period, he had the unique distinction of representing India in various international tournaments abroad. The highlight, however, was leading the India team in Pakistan in 2008. He was also shortlisted for the Eisenhower World Cup also in 2008 in Adelaide, Australia.

A widely travelled and suave personality on board of IPI bus can only contribute to strengthen the Company and reach more ambitious goals!



WHAT'S NEW **Toro Turf Equipment**

THE ROYAL ST GEORGE'S GOLF CLUB PREPARES FOR THE OPEN WITH TORO® EQUIPMENT

Greenkeeping team creates optimal course conditions with Toro mowers and irrigation

BLOOMINGTON, Minn. - Final preparations for The 149th Open at The Royal St George's Golf Club in Kent will soon be complete, thanks to the hard work of a dedicated team of greenkeepers and a fleet of Toro® equipment. The Open returns to Royal St George's for the first time since 2011, marking the 15th time the course has hosted the Championship.

Originally scheduled for July 2020, The 149th Open was cancelled due to the COVID-19 pandemic -w the first time since World War II that the event did not take place. Players will compete from 11-18 July 2021, and up to 32,000 fans are expected each Championship day.

Royal St George's has undergone months of preparations to welcome players, spectators and members of the media - and Toro and its UK distributor, Reesink

Turfcare, are honoured to provide equipment and support for this historic event. The world-famous golf course began its long relationship with Toro with a fleet deal in 2013, and that relationship has continued with the installation of new irrigation in 2018 and the lease of additional equipment in 2019.

After installing the Toro Lynx Central Control System and over a thousand sprinklers across the greens, tees and fairways in 2018, course manager Paul Larsen and his team have been able to target irrigation to the areas that needed it most - conserving water through a series of very dry and hot summers. According to Larsen, the system has been instrumental in helping to maintain the highest standards leading up to The Open.

The 18 - hole course is using Toro

Reelmaster® fairway mowers, Groundsmaster® rough mowers, Greensmaster® TriFlex™ Hybrid riding greensmowers and Greensmaster Flex™ walk-behind greensmowers to create a first-class finish for The Open. Reesink will also be loaning the club additional machines to keep up with maintenance demands.

"Royal St George's is considered one of the world's best golf courses, and we are thrilled that they have chosen Toro equipment to create optimal playing conditions on their course," said Peter Moeller, vice president at The Toro Company. "Like the rest of the golf world, we are looking forward to the return of The Open. History is being made here, and we're proud to be a part of it by supporting the greenkeepers at Royal St George's throughout the Championship as well as in the future."



WHAT'S NEW Toro Turf Equipment

BUILT FOR TODAY AND FOR THE FUTURE

This year's introduction of Toro's new all-electric fixed-head Greensmaster® e1021 mower extends the golf industry's largest lineup of all-electric and hybrid mowers and utility vehicles. Toro's advanced lithium-ion technology ensures long operation time, high productivity, and reduced operating costs. And you can get an early start, too, because the quiet operation lets you work anytime even in areas with noise restrictions or regulations.

LITHIUM-ION GREENSMAS- TER MOWERS

The Greensmaster name is synonymous with excellence, and the lineup of all-electric Greensmaster mowers maintains the superior cutting quality and ease of use while advancing efficiency.

The new all-electric fixed-head Greensmaster e1021 mower can mow



up to 35,000 square feet (over 3,000 square meters) of turf on a single charge. It features Toro's proven DPA cutting units and a 21-inch (53.34 cm) cutting width for a perfect combination of cutting performance, easy maneuverability and productivity. A convenient LCD screen gives the operator an instant view of the ongoing battery charge status and

can also indicate diagnostics, machine hours, overall battery health and initiate backlapping.

The Greensmaster eFlex 1021 adds quiet lithium-ion operation to the already popular Flex™ 1021. The DPA cutting units feature Toro's EdgeSeries reels for a superior cut with improved reel edge retention. The innovative telescoping loop handle also helps to deliver a more consistent cut, adjusting easily to comfortably accommodate operators of varying heights and reduce operator fatigue.

The EnergySmart™ technology in the Greensmaster eTriFlex™ 3370 riding mower ensures the perfect blend of power and efficiency for all-day operation. With all-electric components for traction, steering, lift and cutting units, the eTriFlex



3370 operates with low noise. With greaseless bearings and no hydraulics to leak, the eTriFlex 3370 protects greens as well.

QUIETLY EFFICIENT HYBRID MOWERS

The industry's first fairway mower with a true hybrid drive system, the Reelmaster® 5010-H uses PowerMatch technology to pair the diesel engine with a self-charging battery pack. When challenging mowing conditions demand more power, the battery pack takes the load of the cutting units away from the engine, leaving more available horsepower for the traction circuit. The result is quiet operation that saves fuel and cuts operating costs, all while delivering an outstanding after-cut appearance.

The Greensmaster eTriFlex 3360 features a gas engine that drives a generator for the power you want and the quiet operation you need. The efficient design provides up to 20 percent fuel savings over comparable



Triflex mowers. Like the eTriFlex 3370, the 3360's components for traction, steering, lift and cutting units are all-electric, and there are no hydraulics to leak.

Two other Greensmaster hybrid mowers



are the gas-powered TriFlex 3320 and diesel-powered TriFlex 3420. Both models feature an all-electric reel drive that reduce noise, eliminate hydraulic leaks and deliver plenty of power for unparalleled performance in challenging cutting applications. They include an energy-saving mode that reduces the engine's RPMs while maintaining a constant reel speed through the all-electric reel drive. This results in lower fuel consumption and noise while maintaining quality of cut,

inches (7.6 cm) of ground clearance compared to traditional Workman GTX vehicles, protecting turf and making it easier for operators to drive over rough or uneven areas without causing damage. It also has the largest cargo capacity of any lithium-ion powered model in its class, up to 1,200 lbs (544 kg) of capacity for a two-seat configuration with a bed. In addition to the quiet operation and plenty of power, the lithium-ion technology reduces



maintenance needs.

THE COURSE WHISPERERS

Toro's all-electric and hybrid mowers and utility vehicles are ideal for courses everywhere, especially those near homes, resorts and anywhere with noise restrictions or regulations in place. The highly efficient operation with zero or low engine exhaust emissions also helps courses meet environmental and sustainability goals for a better future.

performance and productivity.

WORKMAN® GTX LITHIUM-ION LIFTED

Get quiet performance from your utility vehicle, too, with the Workman GTX Lithium-Ion Lifted. It offers three additional



WHAT'S NEW

Toro Turf Equipment

REDEFINING PRODUCTIVITY

What will your next 4.9 m (16') rotary mower do for you? Will it reduce your fuel and maintenance costs? Automatically clear chaff from the intake screens? Or tell the operator when there's a potential problem ... and then point the technician directly to the trouble spot? If your next mower is the completely new Toro® Groundsmaster® 5900 or 5910, the answer is "Yes" and much more.

Welcome to the next generation of wide area rotary mowers. The Toro Groundsmaster 5900 Series sets the new standard for productivity, uptime and low

daily operating costs.

COUNT ON INNOVATION

Toro Groundsmaster mowers are renowned for their power, durability and reliability. After listening to customer input, our engineers set out to build a mower unlike any other. The 74 kW 99 hp) turbo - diesel engine powers you through the toughest turf. Sophisticated onboard diagnostics and an innovative cooling system maximize uptime. And for ultimate operator comfort, the 5910 offers a factory installed climate-controlled cab.

MAXIMIZE YOUR CUT

The 5900 Series is all about covering maximum ground. With the cutting decks down, you get a full 4.9 m (16') cut capable of mowing more than 100 acres (40.5 hectares) per day.

To mow between objects or along narrower areas, operators may raise either left or

right wing decks (361 cm [142"] width of cut) as well as both decks (234 cm [92"] width of cut). The cutting units can be set from 25-152 mm (1-6") to handle a wide variety of conditions.

The rotary cutting blades are mounted on hefty 32 mm (1.25") diameter spindles found on all Groundsmaster® models with 241 mm (9.5") cast iron housings. These are the toughest spindles in the business, ready for years of constant cutting.





WHAT'S NEW

Toro Golf Irrigation

INFINITY® SERIES SPRINKLERS: PRECISION WITH INFINITE POSSIBILITIES

Your irrigation system is only as precise as the component that directly applies the water to the turf. Toro's INFINITY® Series sprinklers are designed with exclusive features that deliver precision where it matters most - so you can apply water with unmatched control.

Let's take a closer look at four ways INFINITY sprinklers can help you save time, minimize disruption and create a superior playing experience:

1. More control for precise, efficient watering.

INFINITY sprinklers are equipped with several features that give you more precise control:

✓ The ratcheting riser adjusts your left alignment in 5-degree increments with no disassembly required. Simply pull up the riser and ratchet to the precise position you want to water. The competition can only adjust in 16-degree increments and requires disassembly.

✓ You can adjust the trajectory of the throw from 7 degrees to 30 degrees in 1-degree increments while the water is on. This gives you ultimate flexibility, regardless of windy or other conditions.

✓ You can also adjust the sprinkler from being a full-circle to a part-circle model. It's easy to change the area of coverage with no disassembly or additional parts required.

✓ INFINITY sprinklers offer the industry's largest precision nozzle selection, from 25' to 100' radius throws. You have the flexibility to choose from Main, Intermediate and Inner nozzle options for maximum precision based on course conditions.

Beyond these features, INFINITY sprinklers have a Lynx® Smart Module inside -



which basically puts a mini computer in the sprinkler. The Lynx Smart Module allows golf courses to water to an exact amount with precision calculated down to the second via the Lynx Central Control System.

2. Ease of use and service without digging.

In the past, working on sprinkler systems meant digging around the sprinklers, which would cause turf scars and potential hole closures. It also took a lot of labor. INFINITY makes all the key components easy to access from the top with the SMART ACCESS™ design. There are just three simple screws to open the sprinkler up from the top.

This design gives you instant access to all the sprinkler components, including the wires, solenoid, pilot valve and pressure adjustment - without needing to shut off the water. You can also remove the head without shutting off the water and easily make adjustments as conditions change.

This potentially cuts sprinkler maintenance from hours to minutes, which can add up to a huge time savings for your crew. You don't have to deal with unsightly turf scars from digging, and there's less disruption for players on your course.

In addition, nozzle-based clutching makes hot spot watering easier than ever. No more dragging a hose out to a green to water hot spots - you simply manually flag the sprinkler on, adjust the trajectory and hold the head in place to put the water exactly where you want it.



3. Protected components for lasting reliability.

INFINITY sprinklers keep smart technology like the Lynx Smart Module protected so the sprinkler can run reliably. The protective enclosure isolates wire splices from the soil and potential shorts to ground.

The Lynx Smart Modules inside INFINITY sprinklers are also extremely durable. They're built to withstand tough lightning conditions with best-in-class surge protection.

4. Future-proof design for upgrades without replacement.

When you make a significant investment in technology, there's always a fear that you'll be missing out on something better down the road (hello, smartphones). INFINITY sprinklers take that fear out of the equation. They're completely backward and forward compatible with room to upgrade and grow.

- ✓ The SMART ACCESS design allows you to add features and enhancements for decades to come using only a screwdriver. You won't need to invest in new sprinklers to take advantage of new technology.

- ✓ Lynx Smart Modules let you perform software upgrades remotely with the click of a button from Lynx Central Control. You can add features and enhancements without digging, turning off the water or valving off areas of the course.

- ✓ When needed, the optional INFINITY Razor™ Kit is an easy way to elevate the sprinkler without digging (for example, when sprinklers have fallen below grade level due to topdressing applications or settling). This can delay re-setting heads to grade by as much as 10 years.

- ✓ In areas where you want to eliminate sprinkler interference, the INFINITY STEALTH™ Kit creates a seamless turf appearance. It eliminates the hard surface golf ball bounce, should the ball hit the sprinkler, as well as removing trip hazards. It also reduces trimming efforts around sprinklers.

What's more, Toro's INFINITY sprinkler has been the No. 1 sprinkler sold because it's designed with the future in mind. With INFINITY sprinklers, you won't need to invest in new sprinklers as technology advances. Plus, you'll begin saving time on sprinkler service and maintenance from day one.





WHAT'S NEW

Yamaha Golf Car at

THE POONA CLUB GOLF COURSE

PCGC, as it is fondly called by golfers, is one of the oldest and most prestigious golf courses in the country. With its 18 holes in 100 acres, The Poona Club Golf Course is also one of the busiest courses in the Western part of India.

IPI has been proudly associated with PCGC providing the entire fleet of TORO Turf Equipment and YAMAHA GOLF CARS.

Aware of the environmental benefits of using YAMAHA CRUISE Golf Cart, PCGC continues to combine its history with the innovation to provide the utmost experience to its members golfers adding three brand new flamboyant golf cars to the existing YAMAHA fleet. We are honoured to have this long and trusted association with PCGC.





WHAT'S NEW

Yamaha Golf Car at

ITC GRAND BHARATH, GURGAON

ITC Grand Bharat, the prestigious 5-star golf resort located in Gurgaon, along the northern end of the Aravalli Range, is spread on an vast area of 1.2 square km.. The resort has a 27-hole golf course designed by Jack Nicklaus. The first of its kind in South Asia, the golf course offers three courses each with nine holes - The Ridge Course, The Canyon Course, and The Valley Course.

ITC Hotels Group operates on the principles of 'Responsible Luxury' and environmental stewardship. Even while playing a relaxing activity such as golf, it is important to consider the sport's impact on the environment. Yamaha Cruise is the best amongst the Eco-friendly golf carts. The use of batteries do not have any impact on carbon footprint and reduces noise pollution as Yamaha Cruise run

silently and efficiently!

IPI - YAMAHA is proudly associated with ITC HOTELS GROUP in providing the sustainable vehicles able to combine the comfort and luxury with the environmental protection according to principles of "Responsible Luxury" embraced by the Group.





WHAT'S NEW

Yamaha Golf Car at

THE GAEKWAD BARODA GOLF CLUB

Gaekwad Baroda Golf Club established in the mid nineties is Baroda's premier club and Gujarat's oldest private golf club located in the heart of the city around India's most magical palace, Lukshmi Vilas, built by Maharaja Sayajirao Gaekwad III in 1890.

It remains the residence of the Royal family, who continue to be held in high esteem by the residents of Baroda. In the 1990s Ranjitsinh Pratapsinh Gaekwad's grandson Samartjitsinh, a former Ranji trophy cricket player, renovated the course and opened it to the public. India's only golf course wrapped around a majestic 125 year palace offers awesome

views of the palace from every hole, has an inimitable heritage appeal. The lush expansive greens are home to flitting peacocks amidst age-old tamarind and neem trees. It is regarded as one of the most picturesque golf courses in Gujarat. It is also a course that all golfers from novice to experienced will truly enjoy. Designed and developed by Ranjit Nanda, a former Indian amateur golfer and international design consultant, the course is truly world-class. The undulating greens are immaculately maintained and dotted with natural water bodies. With five teeing ground options on each hole and perfect layout for shot makers and strategic players, the GBGC course

delivers a challenging and unforgettable experience.

To add more comfort to its golfers, Gaekwad Baroda Golf Club management has recently updated its fleet with two Yamaha Cruise Green & White golf cars, unique in their style and efficiency. At Gaekwad Baroda Golf Club and around Lakshmi Villas Palace, you can expect the most comfortable and luxurious ride with Yamaha Cruise Golf car. With industry-leading Yamaha Cruise features, including the widest seats on the market, the largest occupancy space and a stylish, automotive dash, you simply will not want to ride any other way in such close proximity to the famous Maharaja's Palace!





A loss for the Golf Community by Ravi Garyali

I had been in regular touch with Kiran Meda during the lockdown and, lately on 27th April, had the privilege to wish him on his 49th birthday. He was recovering and, as a fearless fighter, was ready to take ahead the adventure of life and face all the difficulties that it had to present. When, on 31st May, the sad news spread amongst the golf community, I was rather shocked, with no words to express my feelings for his untimely demise.

My heart thoughts goes out to his family and loved ones for the inexpressible grief. I pray that the Almighty gives his family the strength to withstand this tragic moment. I couldn't stop thinking to all the efforts that, Kiran, as Chairman of Eagleton Golf Village, made to pursuing the visionary growth and success of his late father, Ashok Kumar, a dear personal friend of

mine.

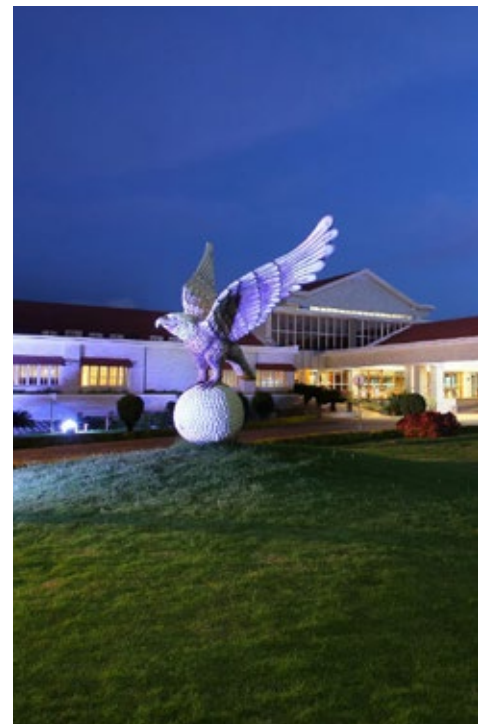
I met Kiran for the first time at Los Angeles (California) where he was completing his Master in Engineering / Management with the dream to continue the family project, Eagleton The Golf Resort. Upon the passing of his father in 2012, he became the Chairman & Managing Director. I was impressed by his humility, his enthusiasm, his ability to deal with the difficulties, without compromising the precious time for his dear family and his passion for travelling.

Along with his brother Chetan, proudly completed the construction of Eagleburg, a new golf course and residential project in Mysore.

I express, along with all IPI team, TORO and YAMAHA, our heartfelt condolences

to the family, interpreting the thoughts of the entire golf community.

Your loss, Kiran, is irreplaceable. Your kindness and your smile will give us a lifetime of memories to cherish.





In memory of Sanjay Kulkarni *by Vincent Pinto*

Sanjay Kulkarni, former Golf course Supdt of Oxford Golf Resort, died unexpectedly due to Road accident on 3rd August 2021 near Pune. At the age of 51 Years. Sanjay is survived by his wife and two daughters. The tragic accident took place near Shirwal, Pune in Maharashtra. Sanjay was travelling with his driver in his car when they had stopped near a traffic jam and a truck from behind came and rammed into his car. He and his driver died on the spot. Sanjay was born on 12 May 1970 at Srirampur, near Shirdi in Maharashtra and he did his horticulturist graduation (BSc in Horticulture) from Kokan Krushi Vidyapeeth Dapoli, Maharashtra). He worked as horticulturist at Indo American in Mumbai and then he joined Godrej for a short stint before joining Oxford Golf Resort as Superintendent. In 5 Years

of his tenure, he showed exceptionally skill set to become one of the best Golf Superintendent in India. The Agronomists from Australia had heaped praise for his exceptional style of working. The Golf Industry has lost a gem.

Sanjay was very simple, humble, soft spoken and hardworking with excellent management skills. His analytical skills were outstanding. His Focus for finer details were praise worthy.

His untimely passing away has left everyone shell shocked.

We wish his family Gods blessings and may Almighty give them strength to overcome the huge loss.

May his soul Rest in Peace.



THE RIGHT BATTERY THE RIGHT APPLICATION



MAINTENANCE TIPS FROM IPI

HOW TO SELECT THE RIGHT BATTERY FOR THE RIGHT APPLICATIONS

Selecting the wrong type of battery will cause disappointing performances, shortened lifetime and wasted money. Most flooded starting and dual-purpose batteries are best suited for intermittent use and not deep-cycle applications.

Trojan batteries come in India with a wide range of products like high quality, deep-cycle flooded, AGM and GEL for various applications like Golf & electric vehicles, Transportation, Floor Machine and Recreation - Marine & RV.

Trillium Li-ION - Trillium® Intelligent Lithium is the advanced and innovative solution that is available in various capacities suitable for many applications. Trojan Batteries will be your best companion to deliver superior Lithium ION technologies with advanced features,

high runtime and extended life.

Let's explore the different applications of Trojan Batteries in the various capacity volt - such as 6 V / 8 V/ 12V and from 105 AH to 435 AH

Trojan Batteries for Golf & Electric Vehicles - 6V batteries

[CONFIDENCE IS KNOWING YOUR BATTERY WILL OUTLAST YOUR GAME](#)

Trojan Batteries are the preferred batteries in the industry and have been established as the leader amongst the lead batteries for golf cart and electric vehicles. Electric vehicles require high performance batteries over the long run and you can count on Trojan batteries as the most reliable ones.

GOLF CART BATTERY - Durability,

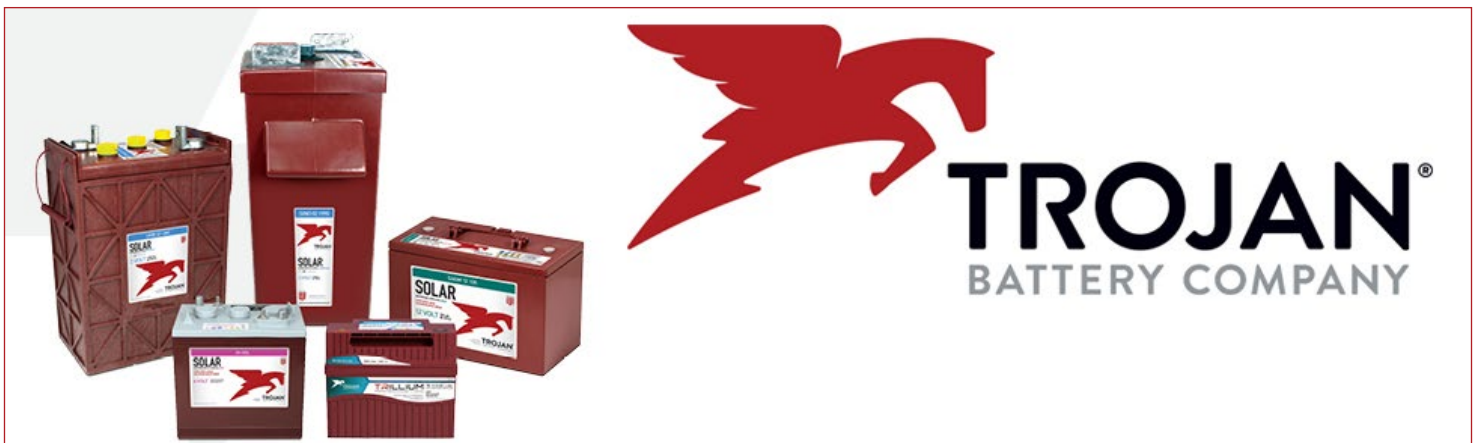
reliability and proven technology mean you can depend on Trojan batteries for consistent performance day in and day out and meet the challenges of the toughest and hilliest courses.



Trojan Batteries for Mobile Elevated Work Platforms (MEWP) - 6V batteries

[TRUST US TO DO THE HEAVY LIFTING](#)

MEWP applications or Aerial work platform require exceptional uptime and extended life come durability without





Trojan Batteries give you the power to shine!

compromising on cost of ownership. As Trojan Batteries come with intelligent built design, the brand offers superior battery technology with a wide range of advanced features.

MOBILE ELEVATED WORK PLATFORM

/ Aerial Work Platform: Trojan Deep Cycle Batteries deliver reliable power and exceptional uptime for the most demanding equipment operating in the harshest conditions and suitable for use in variety of MEWP applications, enhance life and unsurpassed durability for the aerial work platform.

Trojan Batteries for Transportation [Electric vehicles / Utility Vehicles] - 6V/ 8V/ 12V batteries

[Are all heavy duty truck batteries the same?](#)

Heavy duty transportation vehicles depend highly on the intermittent battery system offering high power cycling for prolonged duration. Trojan deep-cycle batteries are the ideal solution for heavy duty trucks, commercial vehicles and refrigeration units, lift-gates and electric APU's. Built to deliver superior performance, durability and reliability, these batteries utilize the highest quality components and meet the challenges of the toughest requirements.

UTILITY VEHICLES: Whether transporting people through airports, delivering hospital goods, maintaining

university grounds and providing warehouse support, the Signature Line of deep-cycle flooded batteries is the flagship of Trojan's product portfolio as Reliant AGM and Gel batteries deliver reliability, maximum utilization and increased uptime.



Trojan Batteries for Floor Machine - 6V/ 12V batteries

[POWER TO GET THE JOB DONE RIGHT](#)

Trojan batteries are high performance batteries that are truly outstanding in providing rugged durability and consistent performance needed for Floor Machine.

FLOOR CLEANING MACHINES:

Trust Trojan's Deep Cycle Batteries to deliver reliable power for uninterrupted operation of floor cleaning equipment - Floor Scrubber and Sweeper.

They will give you the power to shine!

Trojan Batteries for Recreation - Marine & RV - 6V batteries

[BATTERIES FOR YOUR HIGH - END MARINE CRAFTS](#)

Marine, RVs and recreational boats

prefer Trojan batteries in offering reliable power for the daily operations requiring outstanding performance. On offering long lasting power, there is no other better proven power solution that Trojan.

RECREATION - Marine & RV:

Nothing brings you closer to the great outdoors than enjoying it from your favorite boat or RV. Trojan Batteries can get you where you want to go. Reliability - knowing it will work every time, so you don't have to.

Tips on your batteries maintenance:

While we highlights below the MUST DUE for the essential maintenance of any Trojan lead acid battery, click on how to make your Trojan battery last longer

Watering your lead acid battery is an essential maintenance step that can't be skipped. It keeps your battery safe for use and in optimal condition. Not watering your lead acid battery at the right time can lead to serious damage, but knowing when is the right time to water your battery isn't always easy.

ONLY use distilled water because tap water contains minerals that will harm your battery.

Overfilling will dilute the electrolyte, causing it to expand, damaging the battery.

IPI is an authorized dealer for Trojan Batteries in India.



SPECIAL SOCIAL ACTIVITY

Beat the pandemic with ethics and sustainability - Together is easier - *By Vita Zinna*

The tragedy of the COVID-19 pandemic is having a profound effect on the lives of millions of people around the world. The threat of the disease and increasing casualties are destabilising our communities. Recently imposed restrictions to daily life have forced us to quickly adopt different ways of working, learning and connecting with each other.

The future of work place concept and way of working has been rapidly changing.

Innovation and technology are more important now than ever before. Work from home capabilities and remote connectivity with our Customers in the last two years have shone a light on the power of human creativity and collaboration.

Whilst this crisis has brought unprecedented challenges both for people and society, we've been humbled by the wave of inspiring new ideas developed in response.



Now, more than ever, the creativity, the eclecticism of our WOMEN, focused on the solution not on the problem, made the difference.

Now, more than ever, I firmly believe that ethical and sustainability are essential for the right approach to handle different scenarios in order to turn challenges into opportunities. While the whole world is on its knees, we have to look forward to learning a lesson from this unprecedented tragedy.



We need to think ahead and rapidly evolve in line with the new requirements from economical, environmental and social point of view. We need to learn how to respect and care for the nature and for the people, creating awareness that each aspect of our life will have an impact on the planet where we are only temporary guests.

As history has shown, choices made during crises can shape the world for decades to come. What will remain critical is the need for collective action to build economies that deliver inclusive economic growth, prosperity, and safety for all.

Any recipe? Yes, a lot of them: Innovation, digitalisation, new business model, consistent research to excel in our activities, focus on the people and their families to be able to guarantee a welfare policy for the physical well - being and - more important - spiritual one.

In our Company, with foresight and pragmatism, the conditions for cultural growth and acceptance of the needs of our Colleagues, some of whom are mothers,



have been created with the "Together is easier" project. A program aimed at

reconciling the personal needs of those who work in IPI with the professional ones: from the smart working to a flexibility time schedule, and other initiatives, we ensure that well-being and corporate results go hand in hand. For the sake of all.

The world after COVID-19 is unlikely to return to the world that was. Many trends already underway in the global economy are being accelerated by the impact of the pandemic.

I truly believe that only companies with an ethical and sustainable approach are likely to succeed.



HON. EDITOR - Dr. C.K. GARIYALI

Irrigation Products International Pvt. Ltd.

4/112 2nd Floor, East Coast Road, Neelankarai, Chennai 600115 Ph No: 044-24494387 / 389

Fax No: 044-24494388 Email: info@ipi-india.com / sales@ipi-india.com

Website: www.ipi-india.com / www.golfcart.net.in

