

Volume 18, Issue 4, April 2022

IPI MAGAZINE

GOLF, SPORTS GROUNDS, LANDSCAPE & GREEN TRANSPORTATION

OXFORD GOLF RESORT

From Dream to Reality

PRESTIGE GROUP

IPI receives a Citation of appreciation

JW MARRIOTT GOLFSHIRE

A fleet of brand new Yamaha golf cars for the utmost luxury experience



In this Edition

Volume 18, Issue 4, April 2022



3

MESSAGE FROM OUR MD

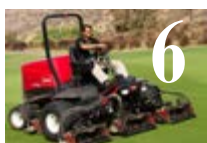
Sustainability Vs. Resilience:
Bouncing Back Is The Way To Look At The Future.

What's special



5

NEW INNOVATIONS RELEASED AT GCSAA CONFERENCE AND TRADE SHOW 2022



6

FROM START TO FINISH

Why Go For A Comprehensive Operation & Maintenance Agreement With IPI?



8

IPI ENTERS IN LONG TERM COMMITMENT WITH HIRANANDANI COMMUNITIES



10

THE FUTURE PROS CLASSIC AT MOUNT ALTERRA GOLF COUNTY

Charitable Golf Tournament for the Caddy Fraternity in Western India organized by IPI.



11

WHAT HAPPENED TODAY?

The making of OXFORD GOLF RESORT
From Dream to Reality

Highlights



14

PRESTIGE GROUP

IPI receives a Citation of Appreciation
IPI is proud to share the prestigious citation of appreciation received from Prestige Group.



16

BANGALORE GOLF CLUB

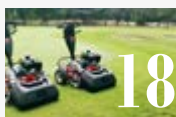
Handing over of TORO Light Weight Fairway Mower RM 3575.



17

MADRAS GYMKHANA GOLF ANNEXE

Handing over of brand new TORO GROUNDSMASTER 3200.



18

THE POONA CLUB GOLF COURSE

Handing over of two Brand new TORO Greensmaster® 1021 walk-behind greensmower.



19

SENTOSA GOLF CLUB, SINGAPORE

Enters 10-Year Partnership with Toro
The Agreement includes complete Toro® equipment and irrigation package.

What's new



21

TORO TURF EQUIPMENT

- ProCore® 648s Walking Aerator
- Workman® UTX
- GeoLink® Solutions™ Autonomous Fairway Mower



24

TORO GOLF IRRIGATION

Lynx® Upgrades
Now enhanced with cloud-based tools that eliminate the need for a desk top device.



25

YAMAHA GOLF CAR

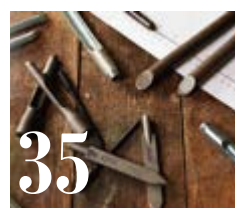
Many courses in india have switched to yamaha golf car in the past 13 years, since ipi is the sole distributor & service provider. Why?



26

YAMAHA GOLF CAR AT

- JW Marriott Prestige Golfshire Resort & SPA
- Coorg Golf Links
- Haldi Golf County
- The Tollygunge Club
- Belgaum Golf Association
- Pilikula Golf Club
- Beldih Club & Golmuri Golf Course
- Lucknow Golf Club
- Taj Exotica Resort & Spa - Goa



35

MAINTENANCE TIPS FROM IPI

Enjoy The Best Of Times
This is part of a continuing series of how-to articles to help you maximize performance and productivity with Toro® products.



36

SPECIAL FOCUS ON

TIGER WOODS
The Greatest Hall Of Famer in the World!
by Tarun Ghogale



38

SPECIAL SOCIAL ACTIVITY

This International Women's Day 8 March, all over the world is highlighting the theme "Gender equality today for a sustainable tomorrow" and call for climate action for Women, by Women.

MESSAGE FROM MD

DEAR FRIENDS

Global supply chains have been in a fragile state since the start of the pandemic and the Russia-Ukraine military conflict will only exacerbate the situation for companies in many industries, particularly those heavily reliant on energy resources.

While the world will be relieved to have seemingly overcome the Omicron variant, a new challenge has emerged where the endgame is not clear.

However, the pandemic has forced us to

reconsider our priorities and approaches and has highlighted the importance of more sustainable and resilient societies.

While Sustainability and resilience are compatible concepts, they are not the same thing. An ideal community, economy or business will be both sustainable and resilient.

Let's deepen the two concepts, with "no presumption of undue influence".

Sustainability implies continuity, something that is replenishable, that indicates that its resources will never run

out or ability to last or continue for a long cycle of life.

These definitions originated from the concepts of balance and continuation in nature. Consider the cycle of a plant in its natural setting: The seed grows, is nurtured by soil and water, matures, dies and breaks down into reusable components that feed the next crop of seedlings. Extra seedlings are produced to compensate for those that do not survive, and the cycle exists in balance with its surroundings.

Resilience is the ability to bounce back



after a disaster, whether natural, such as earthquakes, hurricane tornadoes, or man-made, such as a war. I don't want to classify the pandemic yet because probably it is the result of the abuses against the nature and its cycle.

Resilience involves anticipating disasters and developing systems to mitigate them. It is the ability to become strong, healthy, or successful again after something bad happens.

As Managing Director of IPI, I am committed to ensure that Sustainability and Resilience are our fundamental principles followed by actions which demonstrate both sustainability and resilience need to work together.

We at IPI - TORO are committed to sustainable practices that contribute to resilience as both are the ultimate goals of a healthy community.

Ravi Garyali

SUSTAINABILITY VS. RESILIENCE: BOUNCING BACK IS THE WAY TO LOOK AT THE FUTURE





WHAT'S SPECIAL IN THIS EDITION?

New Innovations released at GCSAA Conference and Trade Show 2022

Exhibitors and attendees were thrilled to be returning in person to the GCSAA Conference and Trade Show, the largest and most important platform in the industry that combines education, networking and solutions for golf course superintendents, equipment managers, owners/operators, general managers, chief operating officers, architects and builders.

The GCSAA Education Conference is the largest education event in the industry and covers all aspects of golf course management, including

agronomics, environmental management, communication and business management. This year event featured 84 seminars, including 26 new seminars joining the line up, as well as a variety of new education sessions and the always-popular education on the trade show floor.

Toro welcomed the participants in the ample dedicated booth and In addition to its in-person presence, offered a dedicated virtual tour on the website with information on the latest products and solutions for the golf course industry. This hybrid approach

allowed those customers, who were unable to attend, to remain aware of the innovative products and solution offered by the Industry.

Toro has a long history of innovations for golf course care and maintenance and the latest products in the Toro® lineup were launched at the recent GCSAA Conference and Trade Show in San Diego.

The Innovative products will be introduced in the Section **"What's new"** of this magazine.



GCSAA
 Conference and Trade Show
SAN DIEGO FEB 5-10, 2022

MOVING FORWARD















WHAT'S SPECIAL IN THIS EDITION?

From Start To Finish

A Turnkey solution for world Class turf maintenance on GOLF COURSES

IPI is associated with TORO golf course equipment & irrigation, which is our core business. But that's not the only focus. In fact, IPI has a dedicated Team of highly skilled and experienced Engineers, Operators and Agronomists specialized in grounds care.

IPI uses TORO's world class products and state-of-the-art technologies in order to deliver the best results as per international standards.

With the dedicated Toro equipment to fit the jobs, IPI, through its grounds care professionals, ensures the commitment

and reliability which it is known for.

A turnkey solution brings advantages that extend beyond using the most innovative equipment. For instance, IPI's core business started with only grounds and large landscape care. That's all we were used to do, and it has been our only focus for more than 29 years. Our experience





and expertise go deep, which makes us an excellent resource when you have grounds care questions or need advice.

Another benefit of a customized Operation & Maintenance Agreement with IPI is that we are thinking about the same concerns that affect your business every day - whether you have a one-person operation or a large company. From keeping operators safe, comfortable and productive to making

to minimize it. You have a job to do, and you count on your or on our equipment. So, when you need service or day to day maintenance, culture practices or renovation of your turf, IPI is there for you with fast parts delivery and on site well trained technicians, skilled operators, agronomists, green keepers and managers to coordinate the operations.

Our agronomists and green keepers will

The result is a range of packages that offers ease of use for operators at every skill level, durability to handle tough conditions, reliability to minimize downtime and keep operators productive. All these activities are making IPI one stop solution provider to helping customers succeed.

WHY GO FOR A COMPREHENSIVE OPERATION & MAINTENANCE AGREEMENT WITH IPI?



sure equipment is always up and running, our priorities are the same as yours.

We also understand that downtime is money lost, and we do everything we can

continually work on new solutions to increase productivity, conserve water, reduce fuel consumption and improve the growing conditions of your turf.





WHAT'S SPECIAL IN THIS EDITION?

IPI ENTERS IN LONG TERM COMMITMENT WITH HIRANANDANI COMMUNITIES FOR TURF MAINTENANCE AND GOLF OPERATIONS OF MT. ALTERRA GOLF COUNTY

With the launch of Mt. Alterra Golf County, Khandala by leading developers Hiranandani Communities, golfers in Western Maharashtra really have

something to look forward to. The golf course is situated on top of a prominent mountain 518 meters above sea level in Khandala and gives a magnificent view of the famed Dukes Nose in the Sahyadri range.

The nine-hole par 27 golf course is designed by Pacific Coast Design to help you relax and disconnect from the outside world. When you finally reach here, you can't help but wonder why it took so long to find something so mesmerizingso close the city!

Each hole has been exceptionally crafted keeping the natural flora/fauna in mind and the contours on the greens make it supremely difficult to hit shots close to the flagsticks. The signature 7th is a 190-yards carry over water to a long but extremely narrow green guarded by bunkers on the right and water on the left. This hole requires a precision shot to the center of the green but that is really easier said than

done especially when the wind gets up. The club also boasts of a medium distance driving range and is ideal for beginners. Certified trainers from the National Golf Academy of India ensure that top level instruction is on offer. The greens are a sight to behold and can get lightning fast during tournaments causing embarrassment to the most seasoned of golfers.

The golf course is managed by Irrigation





Products International Pvt Ltd (IPI) headed by Ravi Garyali, who has been a Pioneer in the Golf Industry since the inception of IPI in 1993.

IPI's rich experience in Turf Maintenance and Golf Operations. IPI will no doubt raise the bar and ensure that the project reaches dizzy heights.

As part of the commitment, IPI provides a total package of TORO equipment to support all areas of maintenance at the club. The package includes a well-trained team of coach, golf professionals, operations manager, machines operators & technicians. An on-site IPI service manager is also based at the club, establishing a

state-of-the-art workshop that will serve as a model for IPI. With the support of IPI's market & communication team, the events & tournaments are organized on regular basis and promoted by Tarun Ghogale Director of Golf & Regional sales for IPI in Western India.

The Golf Course was inaugurated on the 27th of November amidst a lot of fanfare. The Mt. Alterra Golf Classic Tournament was organized and saw participants from golfers from Mumbai and Pune. The golfers drove up on the scenic route to enjoy a fun filled round of golf followed by some top - notch hospitality by the organizers. The course is now open for play six days a week and is about an hour and a half drive from Mumbai/ Pune.

Definitely worth a visit!





WHAT'S SPECIAL IN THIS EDITION?

The Future Pros Classic at Mount Alterra Golf County

Saturday, 28th March will always be remembered as a special day at Mt. Alterra Golf County, Khandala. Our Managing Director, Mr. Ravi Garyali, along with IPI Team headed by Tarun Ghogale, took the wonderful initiative to have a Charitable Golf Tournament for the Caddy Fraternity in Western India. A record setting fifty caddies took part in this gala event where funds were raised from generous donations from Golf Groups all across Maharashtra. The golf course

was in excellent condition thanks to the efforts put in by the IPI maintenance squad which left no stone unturned to ensure the course was prepared as per professional tour standards. The windy conditions and tough pin positions ensured that the scores were on the higher side and it was young Santosh Sathe from Pune who clinched the Cup with a gross score of + 6. Participating players were representing prestigious clubs like Poona Golf Club, Oxford Golf & Country Club, Bombay Presidency Golf Club and Kharghar Valley Golf Course.

Our very own Tushar Harel participated representing IPI and came a creditable 25th in his first ever tournament. The prizes were given away by Mr. Tarun Ghogale, Director Golf IPI at the glittering awards ceremony post the round of golf. This event has certainly set a new benchmark and promises to be the start of many such outings in future. The Golf Caddy Fraternity more often than not goes unnoticed and therefore such events are the need of the hour to promote golf amongst the less privileged.



From dream...



...to reality

WHAT HAPPENED TODAY?

The making of OXFORD GOLF RESORT

From Dream to Reality

Turning an inaccessible barren piece of land with unfriendly terrain and rocky landscape into one of the most spectacular Championship Golf Resort was the most daring dream of Anil Seolekar - The blessed leader with clear vision, iron will, divine strength and his trusted team that could overcome every hurdle that came on their way.

The challenges

Building a golf course itself is a complex puzzle with many constraints, the limits of the property, environmental zones, harsh monsoon, drainage patterns, area of dense vegetation, soil conditions and, of course, elevation changes.

Anil Seolekar had been told by reputed Consultants that a golf course was



impossible because of the lack of top-soil and the complicated terrain.

So comes Phil Ryan of PCD, a true Veteran of the industry to drive the dream to reality.

Oxford Golf Resort continues to remain their most iconic project.

Love at first sight

"When I first set foot on the rough hilly terrain, the site blew my mind.

The more I was becoming intimately familiar with the site, the more I could visualize those dynamic features that I could incorporate into the routing to provide unique golfing experience.

I drew the unusual shape that is sensitive to the natural elevation changes, in order



to minimize extensive earthmoving, in complete harmony with its environment yet giving a breathtaking view to the golfers and to the guests of the golf resorts. " says Phil Ryan

Driven by Passion

Undeterred by the endless challenges ranging from Nasty soil. Out-of-spec-sands, Erosion, near-drought conditions to endless monsoon and extreme weather, the team marched on to a point when a dream becomes reality and reality becomes a dream.

When we started designing the Toro Irrigation System for Oxford Golf Course, we had to keep in mind the beauty of the natural environment and how to make the project viable and sustainable in such rocky terrain.

We had to dig drainage trenches by hand while removing rock where there was no way to make the equipment accessible.

Dealing with challenges

Oxford Golf Resort remains one of the



toughest projects that we ever did, and professionally the most satisfying one too.

Laying of 40 kms of underground pipeline, communication cables, satellites and 800 "Valve-in-Head sprinklers" to ensure

uninterrupted supply of water to reach with 100+ meters of elevation in this rugged rocky terrain needed ultimate skill and character.





A few year later, IPI entered in a long term agreement with Oxford Golf Course providing a total package of TORO equipment and irrigation solutions to support all areas of maintenance at the GOLF COURSE. The package includes a fleet of YAMAHA CARS to guarantee efficiency and safety to all the golfers.

Beyond a new fleet of irrigation and course maintenance equipment, the agreement includes an entire team of highly skilled technical service engineers and an on-site IPI service manager who is based at Oxford Golf Resort, establishing a state-of-the-art

workshop that will serve as a model for IPI.

Oxford Golf Resort Now

The course itself features a 7,020-yard layout with a challenging par 72 design that will continue to improve as it matures.

Oxford Golf Resort is being enhanced with over 25,000 trees and other plants in a simple but strong landscape that compliments and links the golf course with the other architectural elements of the development.

Of the 120 golf courses from across the country vying for the awards, three

were nominated for this title and OGR was voted for the award for fourth year in a row.

“Winning once is fun but winning consecutively is proof of the consistent belief to excel and strive to perfection in order to offer the ultimate golfing experience to our clients. Our word of honour is to keep golfers delighted through our journey for years to come and we assure you that it’s only going to get better.” says Anil Seolekar.





HIGHLIGHTS

Prestige Group

IPI receives a Citation of Appreciation

IPI is proud to share the prestigious citation of appreciation received from Prestige Group for the exemplary services extended on the Softscaping of the Party Lawn at JW MARRIOTT - Prestige Golfshire Resort & Spa in Nandi Hills region of Bengaluru.

JW Marriott and Prestige Estates announced the launch of the South Asia's first and largest luxury resort offering from the Marriott Group on 5th March 2022.

The property, spread over 275-acre and includes Prestige Golfshire course and luxury residential development, is strategically located within a 20 - minute drive from Bengaluru's Kempegowda International Airport and about an hour's drive from the city.

IPI has been proudly associated with Prestige Group in a long lasting relationship of mutual quality standards. IPI is honored to remain the trusted service provider of Prestige Group who did not compromise on the quality for the making of JW Marriott

party lawn as this resort, being the best in South Asia, will definitely be a one - stop destination for celebrations and business meetings.

The JW Marriott Bengaluru Prestige





Golfshire Resort & Spa is the ninth JW Marriott property in India. Rajeev Menon, president, Asia Pacific (excluding Greater China), Marriott International said, "As markets open after the pandemic hiatus, India is a key growth market for us. This luxury opening demonstrates our commitment to

creating new benchmarks in service excellence in this region."

For this reason, the JW Marriott Bengaluru Prestige Golfshire Resort & Spa selected an entire fleet of brand new Yamaha Golf Cars and Utility Services Vehicles in the different configurations ensuring the best

luxury experience to their Guests.

The luxury property features a lobby with panoramic views of Nandi Hills, landscaping, as well as sophisticated guest rooms and villas with private swimming pools and lawns.





HIGHLIGHTS

Bangalore Golf Club

Innovation through Tradition

Bangalore Golf Club, (BGC) is known as “*The Heritage Golf*”. With a proud legacy as the oldest Golf course outside the British Isles, BGC is a landmark of the city’s history that represents the class and poise of Bengaluru’s crème de la crème.

Established by a group of aristocratic British men in 1876, it was initially a 12 hole Golf Course. For decades since its founding, it was used by the Army as a training ground. In 2002, the entire landscape was wholly restructured to give birth to an 18 hole golf course of international standard.

Spread over 60 acres of undulating perennials and tree cover, it has two water bodies to increase the challenge level.

BGC renewed the trust in IPI, with whom we have been associated for decades, and enhanced its TORO turf equipment with one of the most innovative Fairway Mower.

On 17th March 2022, our Head of Sales & Service **Mr. Siva Kumar**, along with **IPI Bangalore Service Team**, handed over TORO Light Weight Fairway Mower RM 3575 to Bangalore Golf Club. When all

OEM & Distributors struggle to deliver any Equipment, TORO & IPI strive hard to live up to the expectations of our esteemed Clients.





HIGHLIGHTS

MADRAS Gymkhana Golf Annexe - Chennai

The Madras Gymkhana Golf Course is a links style 18 hole, 6690 yard, par 72 course that has a unique location within a horse race track at Guindy in Chennai. Open to the vagaries of weather, the course is known for its tricky roughs and the unpredictable wind factor. The golf course annexe is a part of the Madras Gymkhana Club that is located at the island grounds on Anna Salai.

On 14th March 2022 the long term relationship has been further consolidated by the handing over of brand new TORO GROUNDSMASTER 3200.

TORO GM 3200, with its fully - adjustable suspension seat and steering column, the fingertip engine controls and optional all-season cab, is designed for all-day comfort. Routine maintenance is also easy with the Groundsmaster 3200/3300 Series. The innovative tilt-up deck design making blade

maintenance and deck cleaning simple. Additionally, all engine maintenance points are easily accessible to help ensure your Groundsmaster runs smoothly and reliably for years. Productivity, comfort, reliability

and versatility are the winning factors of this unique mower.

IPI is proud to be associated with Madras Gymkhana Golf Annexe and glad to be its preferred service provider.





HIGHLIGHTS

The POONA CLUB Golf Course

New TORO Equipment

PCGC as it is fondly called by golfers, is one of the oldest and prestigious Golf Course in the Country. With its 18 hole in 100 acres, The Poona Club Golf Course is also one of the busiest courses in the Western part of India.

IPI has been proudly associated with PCGC providing the entire fleet of TORO TURF EQUIPMENT and YAMAHA Golf Cars.

Two Brand new TORO Greensmaster® Flex 1021 walk-behind greensmower, have been added to the existing TORO fleet in PCGC.

The TORO Greenmaster Flex 1021, designed to bring every operator and the machine into perfect harmony with one another will certainly help their superintendent Mrs. Harshada Abhyankar to eliminate operator influences on cut consistency.

With an industry-first telescoping handle, the machine can accommodate operators of different heights and/or skill levels to deliver a consistent, unparalleled quality of cut on each and every green.

We, at IPI, are proud to have such long and trusted association with PCGC.





HIGHLIGHTS

SENTOSA GOLF CLUB, SINGAPORE

Enters 10-Year Partnership with Toro

The Agreement includes complete Toro® equipment and irrigation package.

Singapore's world-renowned Sentosa Golf Club has announced a 10-year partnership with The Toro Company and local Toro distributor. The formal agreement includes a complete fleet of Toro® golf course maintenance equipment and irrigation products, as well as landscaping tools, training, and on-site service and support.

This announcement marks the latest development in a long-standing relationship between Sentosa Golf Club and Toro. The club has utilized Toro's proven technology for more than two decades, including support during globally televised events like the SMBC Singapore Open and HSBC Women's World Championship.

As part of the agreement, Toro will provide a total package of equipment and

irrigation solutions to support all areas of maintenance at the club. The package includes a range of hybrid and electric equipment, as well as battery-powered landscape tools — all focused on reducing engine exhaust emissions and promoting overall sustainability.

Sentosa Golf Club also has 36 holes of Toro irrigation, including Toro INFINITY® Sprinklers and a Lynx® System including satellite technology, in addition to Toro Turf Guard® wireless soil monitoring to provide in-field data. The Lynx system provides precision water management with features designed to help reduce water usage.

Toro's hybrid and electric equipment and water-saving irrigation systems align with the club's dedication to sustainability. Named 'World's Best Eco-Friendly Golf Facility' for the second consecutive year in 2021, Sentosa Golf Club is recognized

worldwide for its commitment to the environment. The club pledged to become the world's first carbon-neutral golf club by 2022 through initiatives to manage its carbon, water and waste footprint.

"We're looking forward to bringing our fleet into the future with Toro and their Distributor" said Andrew Johnston, General Manager and Director of Agronomy at Sentosa Golf Club. "It's important to us to work with partners who not only share our commitment to the environment, but also support our mission to consistently deliver a world-class playing experience. We treat every day like a tournament day, and we know we can expect that level of excellence from Toro."

Beyond a new fleet of irrigation and course maintenance equipment, the partnership agreement includes support from the technical service team at Jepsen & Jessen



and regional support from The Toro Company. An on-site Toro service manager will be based at the club, establishing a state-of-the-art workshop that will serve as a model for Toro.

Toro also plans to base a centre of excellence at Sentosa Golf Club to support and educate regional clients and staff on the latest products, technology and service developments. With this initiative, Toro joins The R&A and the Asian Tour in

making Sentosa a key base in the region. Both The R&A and the Asian Tour have offices at the club.

The partnership agreement with Sentosa Golf Club comes as Toro begins its 108th year in the golf industry, bringing more than a century of expertise and innovative solutions to the partnership. "This is an historic opportunity for The Toro Company to partner with one of the most respected clubs in Asia and support their mission

of carbon neutrality," said Richard Olson, President and Chief Executive Officer of The Toro Company. "I've witnessed Sentosa Golf Club's passion for the environment first-hand, and it's an exciting time to work them on implementing the latest Toro innovations and technology."

"Sustainability is not a new concept for The Toro Company," Olson continued. "It's deeply rooted in our purpose to provide customers with real solutions that are both environmentally responsible and operationally sustainable."

"As the first industrial conglomerate in Southeast Asia to achieve full carbon neutrality, we take great pride in the fact that we share a common mission with Sentosa and Toro in reducing our impact on the environment," added Philipp Hoffmann, Regional Director of Jebesen & Jessen Technology Turf & Irrigation. "We look forward to supporting the club as they provide world-class golfing experiences, as well as in their sustainability efforts."





WHAT'S NEW **Toro Turf Equipment**

ProCore® 648s Walking Aerator

Toro's ProCore® 648 Aerator has been the industry-leader - and an operator favorite - for years. Now, Toro is building upon the tremendous legacy of that popular model with the introduction of the new ProCore 648s.

Among the many innovative features is electronic drive control for more consistent hole spacing on slopes, higher speeds on

turnarounds with a tighter turning radius, and more. A storage box and accessory LED light kit have also been added. Primary controls have been moved to the end of the steering handle for easy, single-hand operation. Toro's InfoCenter technology has also been added to the operator console for quick access to data and diagnostics.



The ProCore 648s also delivers a faster return to playing conditions thanks to Delayed Mode. During operation, it continuously monitors the position of the coring head in its rotational path and the speed at which the coring head drops to ensure max tine depth on the first entries into the soil. In most turf conditions, this eliminates the need to repair tufted turf.



WHAT'S NEW

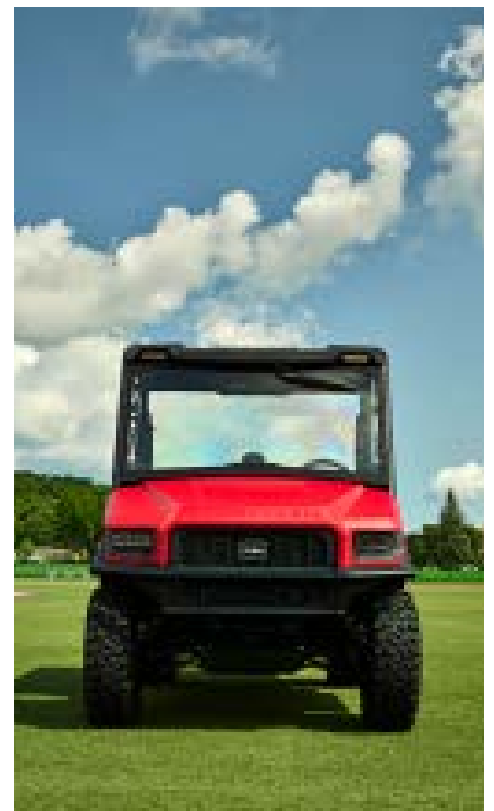
Toro Turf Equipment

Workman® UTX

From the course to the parking lot, the all-new line of Workman UTX utility vehicles are built for work, not recreation. Designed to provide fuel efficiency without sacrificing power, the durable, versatile and road-ready Workman UTX can handle job

after job. Landscaping. Tree maintenance. Trash hauling. Snow and ice removal. Event setup and teardown. Transportation of people. The list goes on and on.

The Workman UTX is available with gas or diesel power and in configurations



with room for two or four passengers. It also comes ready for snow removal with an integrated BOSS® plow mount and a corrosion-resistant, spray-in bed liner. An all-weather cab with heat and air conditioning is available to keep operators comfortable in any conditions.



WHAT'S NEW

Toro Turf Equipment

GeoLink® Solutions™ Autonomous Fairway Mower

After investing more than 20 years of research and development, Toro is excited to put its GeoLink Solutions Autonomous Fairway Mower to the test.

Taking productivity to the next level, the new mower allows golf course superintendents

the ability to increase productivity and get more consistent results.

The GeoLink Solutions Autonomous Fairway Mower is built on years of precision-control research and development, and it delivers the high cut quality the Toro name is known for. During an initial

placement period in 2022, Toro will work with selected sites to test the GeoLink Solutions Autonomous Fairway Mower. The test units will be closely monitored to better understand the operational benefits realized by golf customers, and Toro will gain valuable insight as the technology is optimized.





WHAT'S NEW

Toro Golf Irrigation

Lynx® Upgrades

The Lynx® Central Control System is known for precise, efficient irrigation control, and now it's been enhanced with cloud-based tools that eliminate the need for a desktop device. Lynx Cloud allows superintendents to stay connected to the control system from anywhere at any time.

Data can be reviewed on a mobile device, and adjustments to settings for stations or holes can be made directly through Lynx Cloud in real time. There's no need to make trips back and forth from a problem area to the maintenance shop.

Another capability enhancement is Lynx

Fusion. It allows a Lynx Smart Satellite system and a Lynx Smart Module 2-wire system be combined into one and operated from a single Lynx Central Control computer. Courses will now have the flexibility to phase in a new system rather than be forced to transition all at once.





WHAT'S NEW

Yamaha Golf Car

**MANY COURSES
IN INDIA HAVE
SWITCHED TO
YAMAHA GOLF
CAR IN THE PAST
13 YEARS, SINCE
IPI IS THE SOLE
DISTRIBUTOR
& SERVICE
PROVIDER.
WHY?**

Take a test drive and you will instantly know why.

Electric or gas, there's nothing quite like Yamaha Golf Cars.

A perfect blend of exhilarating power, luxury and expansive space.

And those who are Yamaha customers are our best referrals beside repurchasing additional units to add in the existing Yamaha fleet.

Once you experience
THE RIDE
OF A YAMAHA
the difference is clear.

SCHEDULE A DEMO

CALL @ +91 93812 52255





WHAT'S NEW

Yamaha Golf Car at

JW Marriott Prestige Golfshire Resort & SPA

A fleet of 18 brand new Yamaha passenger & Utility car for a luxury experience in Bangalore!

The JW Garden is a signature of the JW Marriott experience and features a calming space for guests to connect with nature, as well as fresh herbs and seasonal vegetables that guests can harvest and enjoy as part of their culinary journey on property.

To further complement the resort's commitment towards the eco-sustainability, an entire fleet of luxury Yamaha Electric Cars welcome the guests and give them the utmost experience of comfort and elegance with no compromise on environment-friendly policy.

Around the resort, guests can relax and unwind amidst acres of calm greenery and serene landscaped gardens. Private nooks and secluded spaces intuitively located around the grounds, invite quiet moments

of contemplation and reflection. The banks of the resort's lake serve as an ideal spot to linger, while brief mindfulness rituals such as guided meditation sessions leave guests feeling deeply nourished and revitalized in body and soul.

JW Marriott Bengaluru Prestige Golfshire Resort & Spa houses a fully equipped Convention Center, spread over 35,000 square feet and accommodating up to 4,000 guests. The convention center is the first and largest of its kind in Bengaluru,





with a 24,000 square foot, pillar-less ballroom as the ideal venue for large-scale events and lavish weddings. An additional 66,000 square feet of open lawns and a range of smaller halls and breakout rooms provide the flexibility to accommodate transitional event set-ups, large-scale global conferences, exhibitions, outdoor music concerts and more.

"We are extremely satisfied for choosing YAMAHA ELECTRIC CARS at JW Marriott Bengaluru Prestige Golfshire Resort & Spa" said Faiz Razwan "I had first chosen YAMAHA Golf car for my personal use and, once I experienced it, I wanted only the best for our Guests. We are very happy with our Yamaha fleet, but we are even happier with the attention to service

from IPI with whom Prestige Group has been associated for decades. A great partnership for both sides to demonstrate we share the passion for responsible and sustainable eco-friendly innovative solutions. Yamaha was the best and safest choice to provide JW Marriott Golfshire Resort & Spa the quality cars that we needed for our guests and staff. "





WHAT'S NEW

Yamaha Golf Car at

Coorg Golf Links

Beautifully located in the picturesque surroundings, Coorg Golf Links was envisaged in the year 1987 after a round of golf at the then Consolidated Golf Grounds Pollibetta. The idea of having a good golf course in Coorg was always in the mind of golfers.

This dream took a good two years to come true.

During the early 1990's nine holes were built.

Today the clubhouse, the bar, the dining room, card room, new large office cum multipurpose hall and the guest rooms have become very popular among members.

To ensure more comfort to the golfers,

the newest stylish and flamboyant red color YAMAHA golf car has been added to the existing fleet for the entertainment of golfers providing them an exceptional on-course experience.





WHAT'S NEW

Yamaha Golf Car at

Haldi Golf County

The Newest Fleet of YAMAHA GOLF CARS is RED at Haldi Golf County, the venture of Dream Valley Golf & Resorts and Giridhari Homes.

Dream Valley group's first venture is the Vooty Golf County in Vikarabad. It's an 18-hole golf course with luxurious residential units. It spans an area of 250 acres and has a golf academy. It features a clubhouse with the best facilities, premium residential units, and a 5-star resort.

Haldi Golf County, a premium Riverside Golf Commune has been created to

provide an entirely new experience together with the game of Golf. It is many destinations combined into one. While it is a golf course, Haldi also offers golf plots for the investors to reap rich returns or to build a private villa and enjoy the **India's only riverside golf property World-class 18-hole golf course with Five-star lifestyle amenities.**

To add glamour & comfort, Haldi Golf County just invested in a new fleet of **YAMAHA Golf Car** to ensure the most comfortable and luxurious ride every time required by the golfers or the investors.

IPI is proudly associated with both projects of Dream Valley's group since its inception and the trusted long-term relationship has successfully led to a reciprocal continued patronage that made IPI the partner of their choice.





WHAT'S NEW

Yamaha Golf Car at

The Tollygunge Club

The Tollygunge Club was founded in 1895 as a meeting ground for British Merchants and bankers, who sought refuge from the encounters of a sweltering city to carve out a niche for themselves in an otherwise alien environment.

fleet of the Newest Yamaha GOLF CAR to provide the experience of riding a high profile luxury golf cart along with an abundant provision for parking & maintaining it very efficiently through IPI service engineers on-site who extend their

assistance to keep the golf cars ready for the unique ride in the warm, leisurely and friendly atmosphere of Tollygunge Club which is truly an oasis of greenery and quietude in the midst of Kolkata's bustling southern residential district.

Spread over a hundred acres with a Club House that is over 220 years old, the Tollygunge Club is the first country club of its kind in India with a unique collection of flora and fauna, some of which are rare enough to be found in a botanical garden.

Tollygunge Club is the utmost example of how a tight connection between tradition and innovation can coexist successfully.

The members purchased an additional



WHAT'S NEW

Yamaha Golf Car at

Belgaum Golf Association



The Golf Course and Club is an 18 hole, 72 par, 7200 yards Golf Course. Belgaum Golf Association is the first public initiative for such facilities in the whole of the Northern Karnataka-Goa region.

The Golf course Committee decided to address the golfers' requirements and pay the due attention to the members providing them an ever more seamless experience to the players adding 2 more Yamaha Golf Cars to the existing fleet.



WHAT'S NEW

Yamaha Golf Car at

Pilikula Golf Club



The Golf Club was conceived and established by DFO Mr. M.S. Goudar and Dr. E.V. Ramana Reddy, Deputy Commissioner in the year 1998.

Tournaments are conducted regularly with the participation of the Golfers from the State and also from the neighbouring states like Goa, Kerala, Andhra Pradesh, Mumbai & Tamil Nadu.

The demand of golf cars has been increasing all over the Golf Courses in



India and Pilikula Golf Club followed the trend adding a new YAMAHA Golf cars to the fleet which is thoroughly maintained

by IPI Technical team ready to support any requirements from their esteemed customers.



WHAT'S NEW ▶ Yamaha Golf Car at ▶ Beldih Club & Golmuri Golf Course

Founded in 1922, the Beldih Golf Course is happily in the midst of verdant and dense Neem, Gulmohar, Kachnar and Semul trees and the oldest part of the Presidio Forest, making it the most sought-after golf course in the region of Jharkhand.

It is a 9 hole course known for its lush greens & fairways and Its parkland style layout that has an unique appeal to those who love the nature yet the luxury of an eco-friendly golf course. It is home to the annual PGTI event, the TATA OPEN.

Four brand new Yamaha Golf Cars are now part of the fleet available to the golfers who were looking forward for a sustainable green transportation with zero impact on the lavish green nature in perfect balance with the philosophy of the

golf course.

Built a good nine decades after Beldih Golf Course in 2012, Golmuri is an 18-hole golf course with tight fairways and well-located bunkers, giving golfers of all levels of expertise a tough challenge.

It is built on a base of adobe clay, sand and rock or a mix of them. Golmuri is

shaped by the surrounding hilly region on which it stands.

Golmuri Golf Course hosts several golf tournaments such as the TATA Pro Am.

A beautiful flamboyant red Yamaha golf car gives now an additional touch of glamour to the exquisite Golf Course.





**DRIVE FARTHER
AND SMOOTHER.**

WHAT'S NEW ▶ **Yamaha Golf Car at** ▶ **Lucknow Golf Club**

As part of living colonial history, Lucknow Golf Club is situated between Martinpurva on one side and Kalidas Marg on the other side.

Likewise many other golf courses in India, YAMAHA GOLF CAR and IPI have been their preferred choice. Lucknow Golf Club has recently added two brand new red color golf cars to their existing fleet. IPI is proud of being associated with this historical golf Course as total solution service provider across the years.





WHAT'S NEW

Yamaha Golf Car at

Taj Exotica Resort & Spa - Goa

Set amidst fifty-six acres of lush gardens, Taj Exotica is a showcase for relaxation with tropical-inspired design touches, grand architecture and flower lined patios for a memorable stay.

Set on the south west coast of Goa,

overlooking the Arabian sea, the Resort is situated on 56 acres of exquisitely landscaped lawns, complete with tropical plants and graceful palms.

In line with the eco sustainable luxury policy, Taj Exotica added a new YAMAHA

6 seater to enhance the unique experience of comfort to its guests giving them the pleasure of enjoy a ride along the lush greenery and the graceful natural oasis of tranquility.



FOR A LUXURY, SAFE AND COMFORTABLE EXPERIENCE



MAINTENANCE TIPS FROM IPI

Enjoy The Best Of Tines

This is part of a continuing series of how-to articles to help you maximize performance and productivity with Toro® products.

Toro® ProCore® and Bullseye™ aerators are known for their productivity and the quick return of turf to playable conditions. An essential part of ensuring clean, precise aeration hole quality is using the right tines and setting them up properly. This article will provide tips for tine selection and setup.

More Than A Catalog

The Toro Titan® Tines Catalog is popular because of its wide selection of more than 150 tine options, but it's also packed with great information to help you choose the

right tines for your needs. This includes measurement diagrams as well as tine selection charts based on models, holes per square foot and more.

The tables in the catalog make it easy to select the proper tines for your machine and your soil. For instance, after viewing the options available for your aerator model, you can then review a description of each tine along with the options for lateral spacing and forward spacing. More information is also available on the pages for the individual tines. Once you determine your tine configuration, you can also determine the proper turf holder.

Adjust For The Ideal Coring Depth

Many factors affect the depth of your aeration holes, especially the length of

the tines and the settings on the aerator. Follow these steps to set the coring depth of your aerator:

- With the machine on a level surface with the parking brake engaged and the key removed for safety, line up one end of your selected tine with the desired aeration depth on the aerator's depth decal.
- Note the letter that the other end of the tine lines up with, then set the depth control lever to the corresponding setting.
- To make sure that your machine is operating properly and that the settings are where you want them, it's a good idea to conduct a Spacing/Speed Test as outlined in your Operator's Manual.

In this example, setting the tine for a 3-inch aeration depth corresponds with setting the depth control lever to G.

Minimize Hollow Tine Turf Tufting

While a weak root system is the primary cause of tufting around aeration holes, it can also be caused by the orientation of the coring tines. Tufting can occur when the tines are set for the plug to be ejected straight back. Instead, rotate the tines 90 degrees so that the aeration hole is on the side.





SPECIAL FOCUS ON TIGER WOODS

The Greatest Hall Of Famer in the World!

by Tarun Ghogale

Wednesday night was a special night in St Augustine, Florida. A certain Eldrick "Tiger" Woods was inducted into the World Golf Hall Of Fame amidst much fanfare and celebration!

I can still recall 1996 like it was yesterday, when this young kid from Stanford University swept aside the golfers and

the golf course to win the first of his five Green Jackets in inimitable fashion at The Masters Tournament at Augusta National, Georgia. From there on pretty much every young golfer wanted to be him, myself included. The Sunday Red became famous world over as thousands would throng the galleries just to get a glimpse of him and his game. The sheer energy and exuberance

he brought to the sport had never been witnessed before and suddenly everyone seemed to be playing for second place.

By the year 2000 he had his own "Tiger Slam" which he did by winning four straight Major Championships. Not to mention winning the Open Championship at The Home of Golf: Royal St. Andrews in Scotland. Playing some of the most precision golf the world has ever seen he overcame his friend and world number two David Duval with surprising ease. Capturing the US Open at the famed Pebble Beach was no lesser of an achievement and experts felt that he was unbeatable. By 2010 he was well on his way to getting close to the eighteen Major Championships won by the "Golden Bear" Jack Nicklaus. Unfortunately, a combination of a knee injury and a bitter divorce seemed to derail him for a few years. We all wondered if it was the last



we had seen of him!

Being a man of color in a sport dominated by white Caucasians would never have been easy. Through his game he broke barriers and encouraged kids from all backgrounds who eventually got an access to the game of golf. The Tiger Woods Foundation set up by him and his father Earl has been hugely successful in promoting golf to young kids hoping to make a name for themselves in the

sport. They provide scholarships to the underprivileged and give an opportunity to get a full education.

It was quite a break before fans would see him at his best again and not too many gave him a chance to make a solid comeback. Then in 2019 he shocked us all when he went on to win his fifth Green Jacket at Augusta National. The familiar Sunday Red that we had gotten so used to was back! There has not been another

golfer who has captured the imagination of everyone the way he has. I am sure he will continue to prove his critics wrong and laugh while doing it. On a personal front though, I do hope he stays in contention for another ten odd years as I would love to see him get to the magical figure of nineteen Major Championships. And then finally we would may be hear him say "Hello World" again!





HERE'S TO
Strong women.

MAY WE KNOW THEM.
MAY WE BE THEM.
MAY WE RAISE THEM.

Happy
INTERNATIONAL
Womens
Day 8th March
2022

SPECIAL SOCIAL ACTIVITY

This International Women's Day 8 March, all over the world is highlighting the theme "Gender equality today for a sustainable tomorrow" and call for climate action for Women, by Women.

With the latest data, we now understand the vital link between gender, social equity and climate change. We finally recognize that without gender equality today, a sustainable future, an

equal future, remains out of reach.

Women and girls experience the greatest impacts of the climate crisis as it amplifies existing gender inequalities and puts women's lives and livelihoods at risk.

Across the world, women depend more on, yet have less access to natural resources and often bear a disproportionate responsibility for securing food, water and fuel.



As women and girls bear the burden of climate impacts, they are also essential to leading and driving change in climate adaptation, mitigation and solutions. Without the inclusion of half of the world's population, it is unlikely that solutions for a sustainable planet and a gender equal world tomorrow will be realized.

Join us in celebrating all the ways women and girls are taking climate action at all levels and help elevate their voices and support their work.

IPI believes and sustains gender equality and many of our vital departments are headed by Women whose commitment, loyalty, strength and compassion is the pride of IPI.



HON. EDITOR - Dr. C.K. GARIYALI

Irrigation Products International Pvt. Ltd.

4/112 2nd Floor, East Coast Road, Neelankarai, Chennai 600115 Ph No: 044-24494387 / 389

Fax No: 044-24494388 Email: info@ipi-india.com / sales@ipi-india.com

Website: www.ipi-india.com / www.golfcart.net.in

