

Volume 15, Issue 2, April 2021

IPI MAGAZINE

GOLF, SPORTS GROUNDS, LANDSCAPE & GREEN TRANSPORTATION

**HALDI GOLF
COUNTY**
A MOVE UP IN LIFESTYLE

**KHARGAR VALLEY
GOLF COURSE**
CIDCO MASTERS CUP 2021
at KVGC: A stroke towards
development

**IPI WINS
TOP PRESTIGIOUS
AWARD**

**EAST POINT
GOLF CLUB**
The Championship Golf Course
ready to host national &
international events

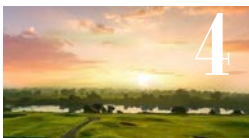




3

MESSAGE FROM OUR MANAGING DIRECTOR

2021 is a significant year for IPI as we embark on our 28th anniversary of serving our prestigious Clients across India.



4

HALDI GOLF COUNTY

Haldi Golf County, the green carpet has been rolled out

What's special



6

EAST POINT GOLF CLUB

Ready To Host National & International Events



8

KVGC - A STROKE TOWARDS DEVELOPMENT

Along with other ambitious projects of Navi Mumbai, the expanded 18 holes International Golf Course will be a pride for the satellite city Navi Mumbai



10

KGA PREMIER LEAGUE AT ITS SECOND EDITION

The Karnataka Golf Association's Premier League, is back in action for its second season ...



11

WHAT HAPPENED TODAY?

IPI Wins Toro's Top Prestigious Distributor of Excellence Award once again!



13

COVID 19 - One year after the beginning of the Pandemic, IPI keeps maintaining accurate Anti Covid preventive measures



14

HIGHLIGHTS

Pebble beach Resorts enters long-term agreement with Toro

Toro becomes Official Supplier of Turf Care Maintenance Equipment ...



15

SPORTS FIELDS

Toro Transporter Essential Equipment At Eden Park

Drop-in cricket pitch technology for high-quality playing surfaces and multi-use facilities

What's new



16

TORO HIGHLIGHTS

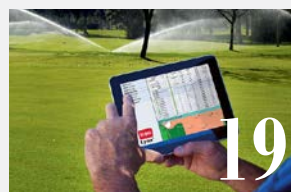
Toro Developing new IntelliDash™ course management Platform
Integrated data will give superintendents unparalleled control



18

TORO TURF EQUIPMENT

Toro Rolls out new innovations at GIS
Golf Industry Show (GIS) may have been virtual, but the innovations showcased by Toro are very real



19

TORO GOLF IRRIGATION

Lynx® Expansion

Toro celebrated the 10th anniversary of the Lynx® Central Control System with major new enhancements...



20

YAMAHA GOLFCAR

Yamaha Golf Car Beyond Any Expectations

Yamaha is an in-demand car at golf courses worldwide for its best combinations of superior technology, best-in-class quality, higher driving comfort and unique sport style



21

YAMAHA EFI GASOLINE CAR

Yamaha Quietech EFI™ - A Gas Car That Is Almost As Quiet As An Electric



22

YAMAHA 6 PASSENGERS ELITE CRUISE

More Comfort, More Safety, More Yamaha

The 6 Passengers ELITE Cruise (4 plus 2) is precisely engineered with your comfort and safety in mind



23

MAINTENANCE TIPS FROM IPI

Routine Maintenance: Why it's important and how to get it Right

Manufacturers' recommended maintenance schedules aren't just arbitrary suggestions. They're based on extensive testing of what's required to maintain the integrity of your machine



25

SPECIAL WOMEN'S DAY AT IPI

Move beyond your obstacle

The challenges of a being a successful professional without compromising the motherhood: the Ipi way to strike a good work/life balance

Leading Women to the Future

I am so fortunate that every day I get to celebrate the successes of my women Colleagues who are breaking barriers at work and being incredible parents too

DEAR FRIENDS CUSTOMERS & BELIEVERS

2021 is a significant year for IPI as we embark on our 28th anniversary of serving our prestigious Clients across India.

Over the past 27 years, IPI, along with its partners Toro and Yamaha, has seen tremendous growth and provided value to its customers, especially in the Golf Industry.

I hope you all are doing fine and remain healthy as the world is still recovering from the global pandemic, an unforeseen circumstance which we all had to go

through.

Even though the past year was a rough one, we at IPI were still able to overcome the difficulties and deliver on our promises. We were awarded the '**Distributor of Excellence**' by TORO for our commitment and results shown as a team.

We must acknowledge the internet technology that made it possible for us to keep the operations going by enabling us to set up work-from-home policy, online technical support, trainings and live webinars, to overcome all the restrictions imposed by the lockdown during the pandemic.

The arrival of COVID-19 vaccines has added to the hopes that we will return to everyday life in the near future.

I believe this is an auspicious moment for me to acknowledge our entire team who have been working tirelessly through these challenging times. I want to make a special mention of our service technicians who have been an integral part of our journey and have devoted their time even when they faced difficulties traveling in different cities.

Golf was the first sport to return as the lockdown norms eased, and the number of rounds played look to go only up from here.

IPI remains the first to support the courses in full maintenance operations and provide a fleet of equipment and golf cars ready to meet the sudden increase in the demand and stay faithful to our motto "**IPI since 1993 there for you always**".

We at IPI never stopped being fully operational as we delivered Toro, Watertronics and Yamaha genuine parts, which our customers needed. Over the past 27 years, IPI continues to maintain its leadership in Golf Industry and it's all because of our insatiable desire to keep getting better at what we do so that we continue to exceed our customer expectations.

The Golf Industry and Sports Fields' focus and commitment remain unchanged, making IPI - Toro - Yamaha Golf-Car, the true market leaders for delivering Quality Products, Innovative Technologies and Excellent Service.

Stay safe, stay healthy and keep rolling!

With respect and gratitude,

Ravi Garyali



INDIA'S ONLY RIVERSIDE
GOLF COURSE



THE GREEN
CARPET HAS BEEN
ROLLED OUT

HALDI GOLF COUNTY: A MOVE UP IN LIFESTYLE

Haldi Golf County, a whole lifestyle project that integrates residential units with 18 holes Championship Golf Course has been launched this year in January.

Located in Toopran, Haldi Golf County is one-hour drive away from Hyderabad city. Strategically tied-up, Dream Valley Group is known as the pioneer in creating resorts and golf courses in Telangana, while Giridhari Homes has completed several prestigious residential and luxurious projects.

HALDI GOLF COUNTY shares proximity to the River Haldi, hence the name. The lavish venture is the spot's prime location with Hyderabad's future tourist destination surrounded by posh and environmentally-rich areas. Away from the city's hustle and

bustle, it is a perfect weekend getaway from Hyderabad with a breathtaking view and spectacular setting. The residential area comes with a splendid golf view bringing a breath of fresh air.

The Golf Course has been designed by Pacific Coast Design, an Australian Company represented in India by Vincent Pinto with the leading architects Phil Ryan and Paul Reeves, who have immense





Haldi Golf County

experience designing Golf Courses across the globe.

Mr. Prithvi Reddy, CEO Haldi Golf County says "Haldi Golf County is the most prestigious, exclusive riverside golf county for those who aspire for a premium lifestyle and a lush green environment. We are building a world-class Golf gated community which will redefine luxury living by offering the best-in-class infrastructure and facilities. Therefore

we selected Irrigation Products International (IPI) as the most reliable and supportive service provider. We have been successfully associated with IPI since Vooty Golf County and our experience has been so positive that we cannot ask for a better service provider!

IPI perceives business as a long term relationship. It has been an integral element in our success and have always offered their whole hearted support for ensuring

the timely progress and the best result of our projects. The most reliable turf care Equipment and Golf Irrigation Systems in the industry remains TORO and IPI is the real partner of excellence for any successful Golf Course in India. As at Haldi Golf County we wanted to give the exclusive experience to our Community of Golfers of having only the best, we were looking for the Golf Cars of our choice coupling comfort, safety, style and reliability along with the sophisticated technology. In Yamaha Golf Cars Elite Cruise we found the ultimate essence of elective affinities between the Japanese precision, attention to details and the Italian luxury style in their unique ergonomic seats. We are confident that Haldi will be the best golfing destination in India and a perfect course for golf lovers and their families across the globe".



Phase - 1 covers 560 plots with all striking features of the fantastic Championship Golf Course surrounding acres of a serene and pollution-free environment.



WHAT'S SPECIAL IN THIS EDITION?

EAST POINT GOLF CLUB (EPGC) - Ready To Host National & International Events

The East Point Golf Club (EPGC), Vizag, launched its Championship Golf Course at Mudasarlova on 20th February 2021. The sprawling greens spread over 86 acres was inaugurated by Chief of Naval Staff Admiral Karambir Singh. He said it was

one of the finest golf courses that meets international standards.

The stunning 18-hole course was facilitated by the EPGC with all the requirements for the Championship Course, upgrading the course to Category-A, ready to conduct

championship tournaments. The course layout was designed by Mr Nandan Hebliker from Bangalore. With these parameters in place, Vizag can soon expect to host National and International tournaments.





Former cricketers and now turned professional golfers, Roger Binny, and Syed Kirmani attended the event. Upon its inauguration, the course awaits the committee from the Indian Golf Union (IGU), the national body responsible for developing and promoting golf in India, to certify it for the championship course title.

The title of Championship Golf Course is traditionally given to facilities housing more than one golf course like the 9-hole course and 18-hole course. Tournaments typically held on the 18-hole course, with water bodies and sand bunkers, are considered to be the most challenging ones. Previously housing a normal 18-hole golf course, the EPGC made the necessary changes for it to be honoured with the said title.

In representation of the entire IPI, Mr. Siva Kumar, Head of Sales and Service, took part of the event supervising a smooth hand over of TORO Turf Equipment such as Fairway mower RM 3575 and Pro core 648.

In line with the Anti Covid precautions, IPI

operation and maintenance training to EPGC workshop manager & operators.

Mr. Siva Kumar proudly said "We are overwhelmed by the appreciation received from the Managing Committee of EPGC, who perceived the support provided by IPI team vital for making the Opening Day as grand as expected."

Notes: The East Point Golf Club in Vizag, established in 1884, is achieving

exponential growth with passing time. Initially built for the relaxation of the British, the course was situated at the now VUDA Park area. It was in 1964 that the golf course was shifted to Mudasarlova owing to the efforts of Raja PV Gajapathi Raju of Vizianagaram. Today, located at a distance of 15 km from the city, the establishment has mesmerising green hills in the backdrop, a beautiful lake, abundant mango and palmyra trees.



In this photo: Former cricketer Syed Kirmani preparing to take a swing at the East Point Golf Club during the inauguration of Renovated Championship Golf Course in Visakhapatnam.

Chief of Naval Staff Admiral Karambir Singh, CNC of ENC Vice Admiral Atul Kumar Jain and former cricketer Roger Binny.





WHAT'S SPECIAL IN THIS EDITION?

KHARGHAR VALLEY GOLF COURSE: A stroke towards development

Along with other ambitious projects of Navi Mumbai, the expanded 18 holes International Golf Course will be a pride for the satellite city Navi Mumbai", quoted

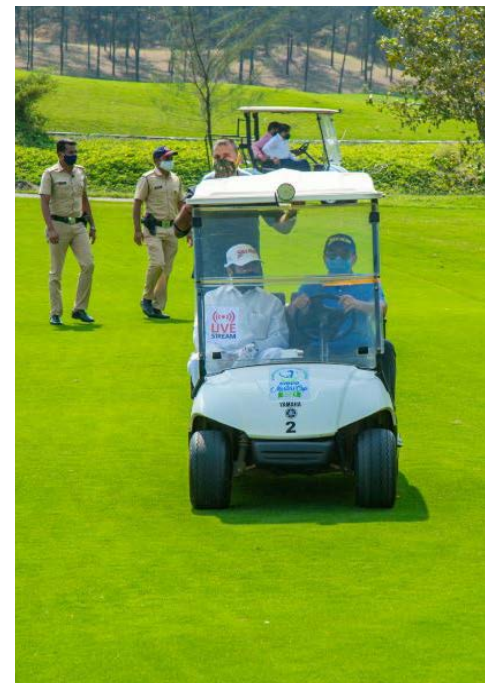
Shri. Eknath Shinde, Cabinet Minister of Urban Development and Public Works Government of Maharashtra, during the inauguration of CIDCO Masters Cup 2021.

commercial tournaments and stimulate international tourism."

The event saw Indian Olympic Bronze Medalist Tennis player, Leander Paes tee-off with golfers from Mumbai and Pune region, like the Bombay Presidency Golf Club (BPGC), The Willingdon Sports Club



Dr Sanjay Mukherjee, vice chairman and managing director of CIDCO said, "We were delighted to host the first edition of the CIDCO Masters Cup 2021. With recent developments and proposed ambitious projects, Kharghar is emerging as an ideal destination for future high-class residential and commercial needs. Similarly, the Kharghar node is looking forward to become a sports hub in the future. The event was the occasion for unveiling the plan for the expansion of KVGC to a full-fledged 18 holes golf course with all modern amenities to conduct





(WSC), Oxford Golf Resort, Poona Golf Club, US Club and Golden Swan.

IPI has been entrusted with the task of running golf course maintenance since the inception of Kharghar Valley Golf Course. For this special tournament, our agronomist team, our Service team and our Operations team have been vital to make the event successful beyond any

expectations. They worked together like one sole team with a common goal.

The objective was to ensure the best playing conditions of the surface with the adequate smoothness, firmness, limited grain and with an overall uniformity. The greens were closely mowed with good to excellent speed.

This is an unmissable occasion to thank our team for the special maintenance practises to the smooth process of operations that finally gave to the golfers an excellent experience. Along with the tournament, we have been whole-heartedly supporting several initiatives such as "Golf for All" & "Learn Golf" to promote golf as a sport to the young & aspiring golfers amongst the local community of Navi Mumbai.





WHAT'S SPECIAL?

KGA Premier League at its second Edition

The Karnataka Golf Association's Premier League, which saw its inaugural season in 2019, is back in action for its second season which started November 21st, 2020. This season was played by 24 teams with 18 members each for an

incredible total of 432 participants!

Yamaha Golf Car was proud to have been associated with KGA in the Premier League which for the second time is confirming to be a big hit drew attention of golf courses

all around the country.

The grand closing ceremony of the 2nd Edition of KGA Premier League was held on 8th February in line with the Anti Covid measures.





Irrigation Products International, Pvt Ltd.

INDIA

DISTRIBUTOR OF EXCELLENCE

INTERNATIONAL

CATEGORY I

WHAT HAPPENED TODAY?

IPI Wins Toro's Top Prestigious Distributor of Excellence Award once again!

Irrigation Products International (IPI) recently received the most prestigious achievement awards as part of The Toro Company's "Partners in Excellence" distributor recognition program.

IPI won the **Distributor of Excellence Award** in 2013, in 2015 and again in 2020.

The award is considered Toro's top honor and is based on outstanding achievements in overall performance including financial health and customer satisfaction.

According to Ravi Garyali, Managing

Director of IPI, "We are thrilled as IPI to have brought this award and recognition to India. It was a great honour for IPI Team to be acknowledged at the very highest level in Toro because all our employees at IPI take pride in their work and contribute to the company's overall success".

"Winning the award in the most challenging and unprecedented year" continues Ravi Garyali, "shows the resilience and character of IPI team.

When we shared the images of our Service

team camping on-route to Golf Courses located in remote areas to provide the technical support - without compromising on Anti Covid measures - we actually shared the Spirit of India, capable to overcome the difficulties and deliver on our promises moving beyond obstacles.

We at IPI believe that only through teamwork we can build the capacity to achieve our common vision to be the trusted and long lasting partner of our Clients.





WINNER

Irrigation Products
International, Pvt Ltd.

INDIA

DISTRIBUTOR OF
EXCELLENCE

INTERNATIONAL

CATEGORY I





WHAT HAPPENED TODAY?

COVID 19 - One year after the beginning of the Pandemic, IPI keeps maintaining accurate Anti Covid preventive measures

In response to the evolving COVID-19 pandemic, we have adopted preparedness and response plans across our facilities and have taken actions to keep employees safe and healthy. In line with guidance from the Centers for Disease Control and Prevention, the World Health Organization and state and local authorities, we have implemented the following safeguards that are intended to slow the spread of the virus.

- Enhanced cleaning and sanitation efforts of our facilities multiple times per day.
- All employees are expected to take their temperature before coming to work, and must comply with physical distancing and safety measures at each of our locations.

- Reconfigured our warehouses facilities and common work areas to ensure proper social distancing.
- Employees are required to wear face coverings when physical distancing cannot be appropriately maintained.
- All business travel by air or rail is prohibited for all employees, except for business-critical purposes.
- Limited all non-essential visitor access

within our facilities.

- Communications posted in our facilities on proper physical distancing in the work environment, personal hygiene, and other health and safety measures.
- Adopted a special COVID-19 leave policy that provides pay for employees who might unfortunately contract the virus, are involuntarily quarantined because of the virus.





Count on it.



HIGHLIGHTS

PEBBLE BEACH RESORTS ENTERS LONG-TERM AGREEMENT WITH TORO Toro becomes Official Supplier of Turf Care Maintenance Equipment at the world-famous golf destination

On February 2021, The Toro Company and Pebble Beach Resorts have finalized an agreement naming Toro as the Official Supplier of golf course maintenance equipment for Pebble Beach Resorts, including their renowned golf courses - Pebble Beach Golf Links, Spyglass Hill Golf Course, The Links at Spanish Bay, and Del Monte Golf Course.

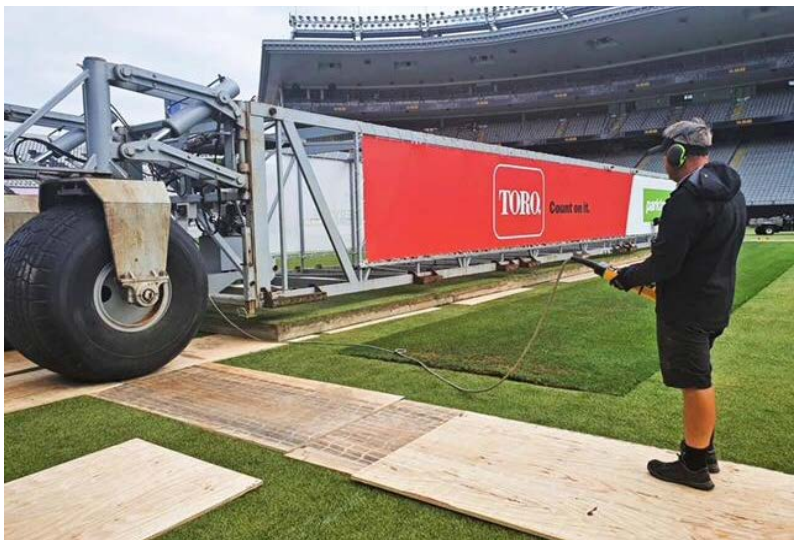
"We are very excited and honoured to enter this new partnership with Pebble Beach Resorts," said Rick Olson, Chairman and CEO of The Toro Company. "Backed by our experienced and customer-focused distributor team, I have the highest confidence that we will be able to provide the very best turf maintenance equipment and support to one of the world's most iconic golf resorts in

their commitment to maintaining the highest standards for players and guests."

"Like Pebble Beach, the Toro name represents a 100-plus-year legacy of excellence and innovation," said John Sawin, Vice President and Director of Golf for Pebble Beach Company. "Our guests, whether they are

competing for a U.S. Open Championship or enjoying a bucket-list experience, expect our courses to be in prime condition year-round. In Toro, we know we have a partner who is as committed to exceeding those expectations as we are."





HIGHLIGHTS

Sports Fields

TORO TRANSPORTER ESSENTIAL EQUIPMENT AT EDEN PARK

Drop-in cricket pitch technology was developed following a desire from stadia and venues for high-quality playing surfaces and multi-use facilities. The innovation has been in existence for several decades with Australia and New Zealand pioneering the concept around the same time, at both the MCG and the former Lancaster Park in Christchurch.

Eden Park has been using a drop-in cricket pitch continuously since 2002. The 118 years of history at New Zealand's national stadium continues to attract a variety of content with field format changes often required in short time frames, from cricket to rugby to football and soon concerts. While some venues convert the field from one sport to another once a year, Eden Park converts between codes several times a year and up to eight times in summer

alone. During the 2015 Cricket World Cup 14 movements were required to deliver the tournament.

Eden Park Turf Manager Blair Christiansen and his team have installation down to a fine art. The process of moving a drop-in pitch from start to finish takes just two to three hours each time.

It is a delicate operation with each pitch tray weighing approximately 20 ton. The TORO transporter itself is 20 ton and the main towing loader weighs 8 ton. Critical to the success of a pitch move is manipulating the moisture content, as without the right levels this can result in permanent scarring, turf death or irreparable damage to the surface. Two staff steer the TORO transporter through remote hydraulic controllers, with one at each end, while two staff operate towing

and side shifting loaders, with two other staff members acting as spotters.

The maintenance of a drop-in pitch is no different to a permanent one. It involves mowing, watering, rolling, fertilising and generally making sure that the grass cover is perfect. An ideal portable pitch should perform in much the same way as a permanent pitch.

Eden Park's TORO Turf Cam allows fans from all corners of the globe to watch their Turf Team transform and maintain the world-class surface, as well as watch the grass grow, through the live feed. The drop-in pitch technology continues to be integral to Eden Park's viability and ever-changing event calendar and has been used over 100 times at the historic ground.



TORO

IntelliDash™

The Intelligence you need. All in one place.

WHAT'S NEW

Toro

TORO DEVELOPING NEW INTELLIDASH™ COURSE MANAGEMENT PLATFORM Integrated data will give superintendents unparalleled control

Course managers and superintendents have access to more data than ever, and the upcoming IntelliDash™ platform from Toro integrates all of that data into a single dashboard. With just a glance, superintendents will be able to view real-time operational data, including agronomic conditions, labor, asset location and equipment health. Course managers will be able to use data to simplify course operations, identify inefficiencies and better allocate resources.

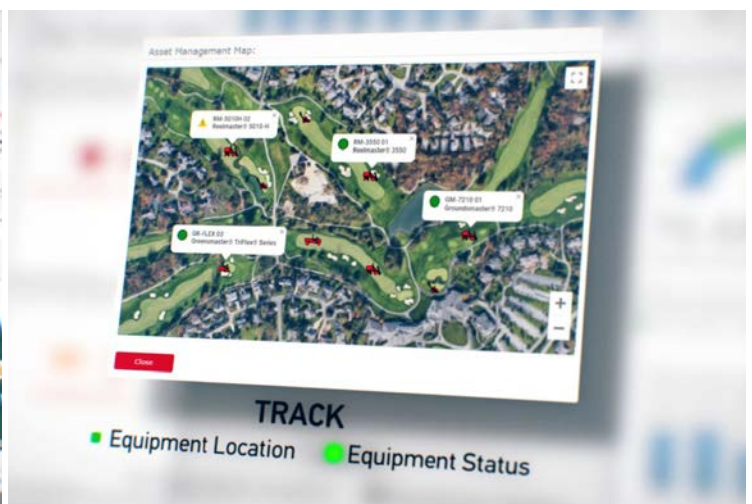
"Toro remains focused on providing valuable

tools for golf course superintendents to more effectively manage the daily challenges associated with labor, equipment and agronomic conditions," notes Tony Ferguson, Toro's senior product marketing manager. "As the market leader in irrigation and turf maintenance equipment, Toro is uniquely positioned to bring together key course elements. IntelliDash will provide operational oversight by allowing greater visibility, monitoring and tracking of course activities."

An essential component for courses that rely on a Toro maintenance equipment

fleet and/or irrigation system, IntelliDash provides a platform that superintendents can easily access on any computer or mobile device, so equipment, labor and agronomic data can be viewed from anywhere at any time. A wide range of real-time data is available, and users can customize the dashboard to display the most important information.

For agronomic conditions, IntelliDash will integrate popular Toro products and other data sources, like Lynx® Central Control and Turf Guard®, enabling users to view





IntelliDash™



irrigation system status, sensor data and the latest weather information at a glance.

IntelliDash will contain a means to manage labor, track expenses and understand operational inputs, over time and by area of the course, providing insights for year-over-year comparisons and effective budget management.

For daily productivity and planning purposes, IntelliDash will provide equipment location, health and status. Equipment health is further managed by the inclusion of Toro's popular myTurf® Pro Fleet Management tool, giving users convenient maintenance scheduling, parts ordering and reporting. For configured equipment, IntelliDash will provide diagnostics and valuable information on engine health, like operational hours and fuel use.

"The bottom line is that IntelliDash is intended to be a tool that golf course managers can use to better manage their operations," adds Ferguson. "With key information all in one location, superintendents can make confident, data-driven decisions."





WHAT'S NEW

Toro Turf Equipment

TORO ROLLS OUT NEW INNOVATIONS AT GIS

On February 2021, Golf Industry Show (GIS) may have been virtual, but the innovations showcased by Toro are very real. From a new Greensmaster® all-electric mower to a major upgrade in precision irrigation, Toro introduced a wide range of solutions for golf course care and maintenance:

Greensmaster® e1021 All-Electric Mower

The new all - electric fixed - head



Greensmaster e1021 mower from Toro takes electrical efficiency to a new level, allowing operators to mow up to 35,000 square feet (over 3,000 square meters) of turf on a single charge. Ideal for applications near homes, resorts and anywhere noise restrictions or regulations are in place, the e1021 helps courses get the after-cut appearance they want while saving labor and operational costs.

Featuring Toro's proven DPA cutting units and a 21-inch (53.34 cm) cutting width, the Greensmaster e1021 delivers the best-in-class cutting performance and easy maneuverability courses need.

TransPro® 200 Trailer

Take productivity for walk mowing golf course greens to a higher level with the new TransPro® 200 trailer. Adjustable roller pockets make it easy to configure



the TransPro 200 to ensure a perfect fit for fixed units and flex units, with or without groomers, giving mowers a super secure ride so that precision settings don't change during transport. Operators will be able to quickly unload their greens mowers and get right to work. A hitch pin release is incorporated into the convenient lift handle, making it quick and easy to hitch and unhitch the trailer.

Expanded Workman® Line

Two new options in Toro's Workman line are perfect for golf courses looking for a utility vehicle that can be customized to fit their needs. The Workman GTX Lithium-



Ion Lifted model combines three additional inches (7.6 cm) of ground clearance with lower maintenance costs. The GTX Lithium-Ion can provide as much as 25% more run time when compared to the GTX lead acid model. Plus, the vehicle's lithium-ion power packs are maintenance-free and eliminate expensive scheduled lead-acid battery replacement. The steel bed accessory boasts the most cubic feet of cargo space in its class. It also features water-resistant polyurea bed coating that not only adds sound and vibration damping, but also provides superior environmental and impact protection. These new products add even more options to a lineup that offers hundreds of possible configurations.



WHAT'S NEW

Toro Golf Irrigation

Lynx® Expansion

Toro celebrated the 10th anniversary of the Lynx® Central Control System with major new enhancements, including more visualization options, rate management tools and cloud-based features. The new version allows superintendents to have a map view of their Precip Management Group (PMG) and the projected amount of irrigation. The Lynx Mobile Cloud update includes user-selected mapping and

touch features that give superintendents superior control from any location. A new automated backup scheduler saves time and protects settings. In all, the latest Lynx enhancements take course irrigation management to the highest levels of efficiency, convenience, and security.

Lynx® 7.0 Get Even More Irrigation Control

Ready to streamline your irrigation

systems? The Toro Company has listened to feedback from the field and has made improvements to the Lynx® Central Control System to include features that will help you water with greater precision, save time on troubleshooting and simplify your daily irrigation process. Find out what the most recent version of Lynx version has to offer.

Unmatched Watering Precision and Control

The latest version of Lynx offers runtime controls to the second and measures inputs to 1/100th of an inch. "I really feel like I'm getting the system dialed in to water like it should," stated Keith Kresina, Director of Grounds at The Golf Club in New Albany, Ohio. "I have my system set up based on the precipitation rate, and then I can set the schedule to deliver that precisely." Supporting runtimes to the second is a feature that's unique to all new Toro® hardware platforms. Comparable systems can only offer runtime controls to the nearest minute.





WHAT'S NEW

Yamaha Golf car

YAMAHA GOLF CAR BEYOND ANY EXPECTATIONS

Yamaha is an in-demand car at golf courses worldwide for its best combinations of superior technology, best-in-class quality, higher driving comfort and unique sport style.

Must be some reasons why YAMAHA is the easy choice! Do you know why?

- ✓ Yamaha has revised its model with the largest occupant space than any other golf car making the most comfortable, safe and convenient travel experience for all the passengers.
- ✓ In fact, the Safety of the users is our key priority, and we ensure this with

the pre-programmed Yamaha Genius2 System (a PDA based diagnostic and programming system).

- ✓ More importantly, you can customize speed and regenerative braking to match the course and terrain.
- ✓ Other critical features are independent front suspension, stylish dashboard, well-positioned cum air-filled bumpers and low-cost ownership.
- ✓ Flexible body panels of Yamaha Golf Cars are highly safe from dent, scratch and scrape proof with fade resistance.
- ✓ Our eco-friendly vehicles run on our courses and facilities without any noise allowing you to enjoy the beauty and voice of nature!

✓ The foldable windshield is designed with high material strength which gives you a safe ride.

✓ Long-lasting battery performance can offer a distant ride with a single charge.

✓ What else do you need when you can use the vehicle at zero maintenance?

IPI, the sole distributor of Yamaha Golf-Car Pan India, is the most trusted Service Provider with a network of highly specialized service technicians who will support you in any requirements at your doorstep. Anytime, Anywhere, IPI, since 1993 there for you always.



WHAT'S NEW

Yamaha EFI Gasoline car

YAMAHA QUIETECH EFI™ - A GAS CAR THAT IS ALMOST AS QUIET AS AN ELECTRIC

LOW COST OF OWNERSHIP AND PROVEN DEPENDABILITY YAMAHA QuieTech EFI boasts the lowest decibel output of any gas car and features the industry's first-ever Independent Rear Suspension on a golf car.

This unprecedented combination ensures your players experience a luxuriously quiet ride.

At 45 MPG and less hydrocarbon emissions, we think you will agree that choosing QuieTech EFI is the most sound business decision you could make for your golf course.



ASK FOR A DEMO AT YOUR GOLF COURSE TO EXPERIENCE QUIETECH® EFI

- ✓ Yamaha-exclusive QuieTech technology
- ✓ Independent Rear Suspension
- ✓ Yamaha-built engine designed for golf
- ✓ Industry-leading fuel economy with Accu - fuel delivery system



WHAT'S NEW

Yamaha 6 Passengers Elite Cruise

MORE COMFORT, MORE SAFETY, MORE YAMAHA!

The 6 Passengers ELITE Cruise (4 plus 2) is precisely engineered with your comfort and safety in mind. Driving our carts, brings you pleasure with stable suspension and impressive torque. Passengers can relax with ample legroom and cup holders for long rides in the sun. With unmatched performance, the luxury seats and the support you expect from IPI - YAMAHA, you can focus on what matters: comfort and safety!

CRAFTED TO LAST

With the unique lengthy one-piece sun top that covers the rear-facing passengers, the 4 Front plus 2 Rear Passenger YAMAHA ELITE Cruise has been designed to stand out as the most styled and comfortable vehicle to give you luxury at an affordable cost for your long-lasting experience on YAMAHA 4FF + 2 RR Passengers.





MAINTENANCE TIPS FROM IPI

Routine Maintenance

WHY IT'S IMPORTANT AND HOW TO GET IT RIGHT

If you had a neighbor with a mint-condition car from the 1970s in his driveway and you asked him how he kept it in such great shape, the first words out of his mouth would probably be *"I took care of it."* He had to perform maintenance on a regular basis.

It may sound basic, but that's also one of the most important things you can do to help your Toro® equipment last longer.

Manufacturers' recommended maintenance schedules aren't just arbitrary suggestions. They're based on extensive testing of what's required to maintain the integrity of your machine. And these recommended scheduled events need to take place in order to get the best quality out of your unit.

So, where do you find this information? The first place to look is your operator's manual. If you don't have yours handy, you can go to Toro.com, click Parts & Manuals at the top and look up your model number or serial number to find the operator's manual and other parts and service details online. Service manuals and machine decals also provide some guidance.

Here are some additional tips to help you get the most out of your equipment investment:

- 1. Make a list of daily operation checks and use it.** Some maintenance items are based on hours of operation. But your operator's manual will also recommend checking certain things each time you use your machine. Recommendations vary by model, but examples include checking the engine oil level, hydraulic system, cooling system, etc.
- 2. Use the proper engine oil classification for your machine.** This may not sound like a big deal, but using the wrong viscosity

grade or weight of engine oil can be serious enough to void your warranty.

- 3. Don't exceed the specified service interval.** You can always perform regular maintenance sooner than required, but skipping or delaying tasks may shorten the life of your machine. Also beware of products and manufacturers that make claims that conflict with the manufacturer's maintenance schedule. These claims don't always hold up, and cutting corners can lead to costly problems. Choose quality products and follow the timing the manufacturer recommends for your operating conditions.





4. **Document everything.** Keep records of the maintenance you've performed and parts you've ordered. This gives you a timeline to keep your maintenance on track and helps answer questions if you need to make a warranty claim. You may be surprised how often owners estimate they changed the engine oil "a couple months ago," when in reality it has been a couple of years.

Logging maintenance can be as simple as keeping a notebook where you write down the maintenance performed and what was used, including oil weights and part numbers. Or for an easier alternative, check out Toro's myTurf® Pro fleet management system. This web-based system can be used to track equipment hours automatically, order parts, schedule service and more — saving a lot of time compared to tracking these things manually using spreadsheets, binders or whiteboards.

5. **Don't forget to do a functional pre-maintenance safety check.** Before you

perform any maintenance tasks, make sure all the safety items are working properly. For example, can you disengage the drives and lower the cutting unit? These "preflight" inspections can give you an indication if you have leaks (such as bearings leaking grease) or help you identify and repair early failures before these issues become more costly problems.

6. **Stick with original equipment manufacturer (OEM) parts.** It may be tempting to grab a filter from the local auto parts store when you need one, but an off-the-shelf product may not have the same specifications as the OEM part. It may look and fit the same but still vary in specification (for example, if a hydraulic filter doesn't have the bypass valve specified in the OEM version). Small differences can result in equipment damage, which can end up costing much more to repair. Why take that chance just to save a few dollars up front?

With Toro® Genuine Parts, you know you're getting the right part with the

exact specifications for your equipment. They're the same parts we use on our production lines to build the original machines, and they're all manufactured with reliable, high-quality materials for maximum performance with less downtime. In addition, all Toro parts have been rigorously tested to make sure they can withstand the demands of daily use. For a current listing of Toro Genuine parts, see the 2021 Quick Reference Guide.

7. **Minimizing Total Cost of Ownership** Toro offers one of the best commercial product warranties in the business, provided the required routine maintenance is performed as described in your operator's manual. These recommendations have been developed to not only maximize your machine's performance but also help minimize your total cost of ownership over that machine's life. To that end, we never stop looking for ways to save you time and streamline maintenance tasks.

MOVE BEYOND YOUR OBSTACLE

SPECIAL WOMEN'S DAY AT IPI

Move beyond your obstacle

"To succeed professionally as a woman who is a mother too, can - at times - be a challenge which one has to overcome proudly"

"No one ever said balancing your commitments at work and at home, was easy. Daily struggle made me stronger and even more determined to achieve my professional goals while raising a child. I am proud to be a mother of a wonderful girl who will be raised and educated to face all the challenges in life remaining always proud to be a woman with an important role to play in the Society."

- Uma [Responsible for After Market Department]



"It is important to believe in yourself and have people who believe in you."

"One of the biggest challenges was actually coming out as Head of the same Department where I grew professionally. Sometimes it is easier to adjust to the comfortable position of team member rather than be the leader of the same team you were part of. It took some time to work through that but when it happened, I realised how it is really important to have people who believe in you to support you when you need to have confidence in your capabilities more than anyone else. My sense of responsibility and loyalty towards my company won me the biggest supporters who brought me where I am standing now with a hope to grow further and enrich my professional experience. I am grateful to our MD, Ravi Garyali, for his magnanimous support and trust he placed in me during my successful journey in IPI."

- Kanaga Valli [Responsible of Commercial Department]

"You have the power to change the things that aren't working"

She admitted that was not love at first sight. Meeting Vita for the first time, who she was expected to work with, can be daunting but Thamizh used her creative mind to view obstacles from a different angle. "Getting over the challenge of communicating with a foreigner who had a different background and culture was the most difficult side of the beginning of my journey in IPI" Thamizh acknowledged. "I just had the faith that the results will come. The thing that I realized is if you don't like

the way things are, change them. There have been times where I've run out of yarn and I just dyed a bunch myself. It's forced me to have more creativity, figuring out other ways of looking at things, of coming up with solutions that I wouldn't have thought of and things became easier. I was always identified as someone who has a good connection with my leaders, with the mission of the company but what matters is to have a good connection with the team that surrounds me. If it doesn't happen I will not just sit and wait for a change but I need to be the change itself. This is what I have learnt from Vita when I started sharing my concerns and listening to her suggestions in order to have different approaches and vision. It was not difficult anymore, I had to just open my mind and be more receptive. Then I understood that together - as a team - we were only looking for a solution. The best solution always, of course!"



- **Thamizh** [Responsible for Marketing & Communication Department]

"Let go of personal baggage for a better professional journey"

"There is a concept that you cannot go professionally where you don't first go personally," Lalitha explained. "So for me, it's the personal journey that has been the challenge. In a lifetime most people can relate to transformation. You're not the same person you were when you were 20. And each decade perhaps brings on a new phase of yourself. When you start something from scratch or you're building something great or you're doing something new, you're really challenging yourself. I have been constantly challenging me to be better at every single aspect of myself. And so the biggest challenge is recognizing that there is nothing that cannot be achieved in life if you really believe in it. I have been inspired by our MD, Ravi Garyali and daily supported in building that confidence in myself along the way and being a stronger person and a better professional."



- **Lalitha** [HR & PA to MD]

"Know That Change Is Inevitable"

Finally, know this about career paths: What you want and what works for you is likely going to change over time. As Manager at IPI Branch in Goa, Diana stated: "The meaning of success for me has altered throughout my life. My priorities were different because the circumstances changed too. The road to a career you love isn't easy. It requires commitment, passion, professionalism and balance between your personal needs and the company's requirements. But as a result, I am a proud mother of two amazing kids and I am passing on to them the same passion and ethical principles for building a life that works for them exactly as I received from IPI, who gave me the strength to face the challenges of life and the wisdom to identify the way forward for a better future."



- **Diana** [Goa Branch Manager]

We, at IPI have many other pages of successful stories of amazing Women who you probably haven't heard of yet, who are making a huge difference by following their professional path without compromising on the importance of motherhood role.

Nagalakshmi, perhaps is one of them.

"The secret of my success? Decide what your career is and be specific and be focused."

The role of a "Senior Irrigation Designer for Golf & Sport Fields Projects" is very crucial for the positive outcome of a project. You are the one who needs, more than anyone else, to understand the project from all angles. You need technical and business acumen to be successful in this specific position. What to do? I have to read to understand more about the project's challenges than just what the role requires. Also, it is really important to meet and exceed all of the expectations from the Client prospective and be ready to revise your design based on the feedback



and be happy to change it again. Being women, we are flexible and able to accommodate the needs of kids, family and husband. The most challenging aspect of my job is eventually my boss, the Head of the Irrigation Division, who happens to be my husband and therefore the utmost demanding colleague in the organisation." Says Nagalakshmi while smiling.

- Nagalakshmi [Senior Irrigation Designer]

There are now more women than ever who have achieved prominent roles in IPI. Let's learn more about their journeys, their career paths and their advices to others:

This is the statement of **Bhuvana** and **Raisa**, who are extremely successful in the sales department.

"Competence is essential - master your subject matter. You should also have the ability to communicate clearly and adjust your communication for the individual you are attempting to reach. And initiative. Voracious curiosity, learning quickly, listening well to what is being said and sometimes, more importantly, to what isn't being said. We are grateful to Siva Kumar, our Head of Sales Department, for trusting in our capabilities and supporting us in the challenges when required with the utmost respect for our roles in the company and as women and mothers too".



"It is important to be respected, and you can achieve that by being credible. Know what you're talking about, work hard, set appropriate expectations, and don't be afraid to put yourself out there." Says **Sangeeta** who holds an important position in the Finance and Accounts Department.

These are successful stories of women in IPI, who will surely inspire the younger colleagues like **Keerthi**, who supports the Yamaha team with commitment an enthusiasm, **Indhira**, who rejoined the company in a role of more responsibility after her maternity, **Divya** who is handling one important segment of Parts Department and **Jancy** who shares her most beautiful smile to welcome all of our clients and make sure everything works perfectly in IPI



Last but not least, an unique sample of dedication to the Company deserves to be highlighted.



When I asked Sivarajini how she is able to conciliate her great commitment and professionalism of handling the Logistics Department at IPI while being a mother of two little daughters, she said smiling: **"Just do it. Dream it and do it. Learn how and when to do more and more without regretting. Enjoy what you are doing and make sure you are having fun in the office and more ever with your kids at home. And don't be afraid to bring new ideas forward, but be respectful of people because behind every smile there are huge efforts to keep it going."**

- Sivarajini [Responsible for Logistics]

What is the reason behind the considerable presence of successful women in IPI?

"At IPI we have a special leader, who firmly believe that Women's economic empowerment is central to realizing women's rights.

That is why we have a special policy with flexible working hours and extended compensatory maternity leaves which enable all the women to conciliate the double role of being professionally responsible while remaining a responsible mother too.

What is the secret of IPI leadership? "*Innovation and vision.*" Says **Priyadarshini Rajkumar, actress and social worker.**

"Great leaders are innovative. They look at things differently, and they teach us to look at things differently. They're also energetic, they can see the whole picture, they have great foresight, and they understand people and business. They're people with ethics, integrity, and honesty - and they are decision-makers. At IPI we are lucky to have Ravi Garyali, our Managing Director, who made the difference in others lives."



Yes, indeed, there are plenty of women who have made it to the top in IPI but Priyadarshini went beyond any expectations. After reaching the leadership in IPI, she made the choice to follow her dream and passion to be an actress. No need to say she made the new adventure another story of success but here and there she is happy to drop by IPI for a nice cup of chai with her IPI fellows who are her greatest fans!

Remember: "Just do it. Dream it and do it!"





SPECIAL WOMEN'S DAY AT IPI

Leading Women to the Future

In the year when Kamala Harris, a daughter of immigrants from India, wins the historic election as Vice-President of the United States of America, we all have to be proud of being Women especially Indian Women.

woman in this office, I won't be the last. Because every little girl watching tonight sees that this is a country of possibilities. And to the children of our country, regardless of your gender, our country has sent you a clear message: Dream with ambition, lead with conviction, and see yourself in a way that others might not see you, simply because they've never seen it before. And we will applaud you on every step of your way."

are following the on-line classes: Education is their security for the future.

Then, with sheer artistry, they wrap the six meters of silk fabric around their body, beautifully elongated, that make them even more fascinating.

Riding the bikes or catching an auto on the way towards the office they are ready to celebrate the daily gained freedom of independence.

They carry their pearly white smile on beautifully tanned faces and spread their enthusiasm and vigour that can conquer the world, by leading their army towards victory and defeat idleness.

My women do not often stop to dwell on the reality that the most difficult daily challenges we face are a result of dealing with human energies. That vibe they sent you, that vibration you picked up... that's just as real as the chair you are sitting on. Our souls are struggling, playing, fighting, winning, losing... all on the playing fields and the battlegrounds of human energy.

Her grandfather, Dr. P.V. Gapalan, was a successful civil servant from Chennai. Her mother, Shyamala, his eldest daughter, left India at the age of 19 to study at the University of California, Berkeley. Kamala's ties to India run very deep. She spent many days in her youth under the inspiration of her beloved Indian relatives, who were progressive academics and successful civil servants.

Upon accepting the nomination, she said, "While I may be the first

There has not been a day since I moved to India, when I don't feel privileged to be part of this unique Community of Women in IPI.

Their day starts much earlier than mine as their day is hectic and plenty of commitments.

They rise at dawn, clean up their abode, prepare the tiffin for their husband and kids, adorn with white Jasmine flowers and decorate the black braids of their daughters.

They kiss on the cheek of their little ones wishing Good day to their loved ones, making sure that they



My women are rich of enthusiasm and freshness, of goodness and determination, of wisdom and life. On the wrists, the "bangles", in the hair the "flowers" and, on the face, a little "Turmaric" to enhance their beauty in devotion to God.

They adorn the Bindi on their forehead, more like a third eye. Long necklaces of Gold to symbolize a union in line with their Karma.



Smt. Indira Garyali - Founder
Saraswati Educational Cultural and Charitable Trust

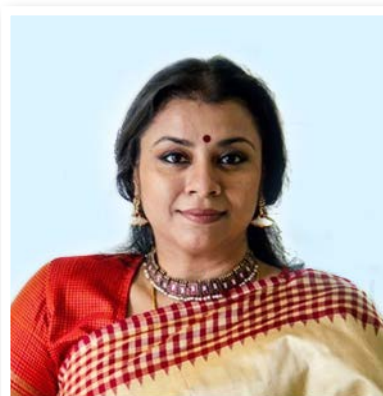
I am proud of being one of them and grateful to the Country that adopted me as a child of the Great Mother of India.

A special thank and immense devotion and gratitude goes to our Late Mother Indra Garyali ji, for her uniqueness and her wide vision and



Dr. C K Garyali IAS
Advisor & Trustee
Saraswati Educational Cultural and Charitable Trust

wisdom, to Mrs. CK Garyali ji, the Iron Lady with an immense heart, who give us uncountable reasons to



Priyadarshini Rajkumar
Actor & Secretary
Saraswati Educational Cultural and Charitable Trust

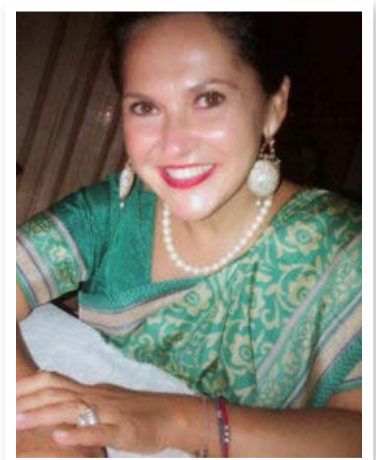
be proud of, and last but not least, to Mrs. Priyadarshi Rajkumar for her courage and strength to be how she loves most. What I learnt from them was love, unconditional love and love is all we need.

Indira Gandhi, Former Prime Minister of India *"To be liberated, a woman must feel free to be herself, not in rivalry to man but in the context of her own capacity and her personality."*

J. Jayalalithaa, Former Chief Minister of Tamil Nadu, India *"Only when women are financially independent, they will gain confidence and willpower to bridge the gender gap. If a woman thinks she can, she can not only rewrite her fate but also the lives of the others."*

Margaret Thatcher, Former Prime Minister of the United Kingdom *"In politics, if you want anything said, ask a man. If you want anything done, ask a woman."*

The Author



Vita Zinna Garyali

HON. EDITOR - Dr. C.K. GARIYALI

Irrigation Products International Pvt. Ltd.

4/112 2nd Floor, East Coast Road, Neelankarai, Chennai 600115 Ph No: 044-24494387 / 389

Fax No: 044-24494388 Email: info@ipi-india.com / sales@ipi-india.com

Website: www.ipi-india.com / www.golfcart.net.in

